

About the site manager

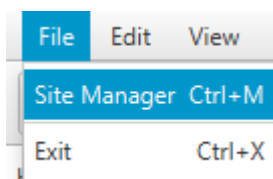
The site manager aims to make it easy for end users to store connection data related to the different Pathomation server instances (PMA.core, Pathomation cloud...).

It can be initiated via :

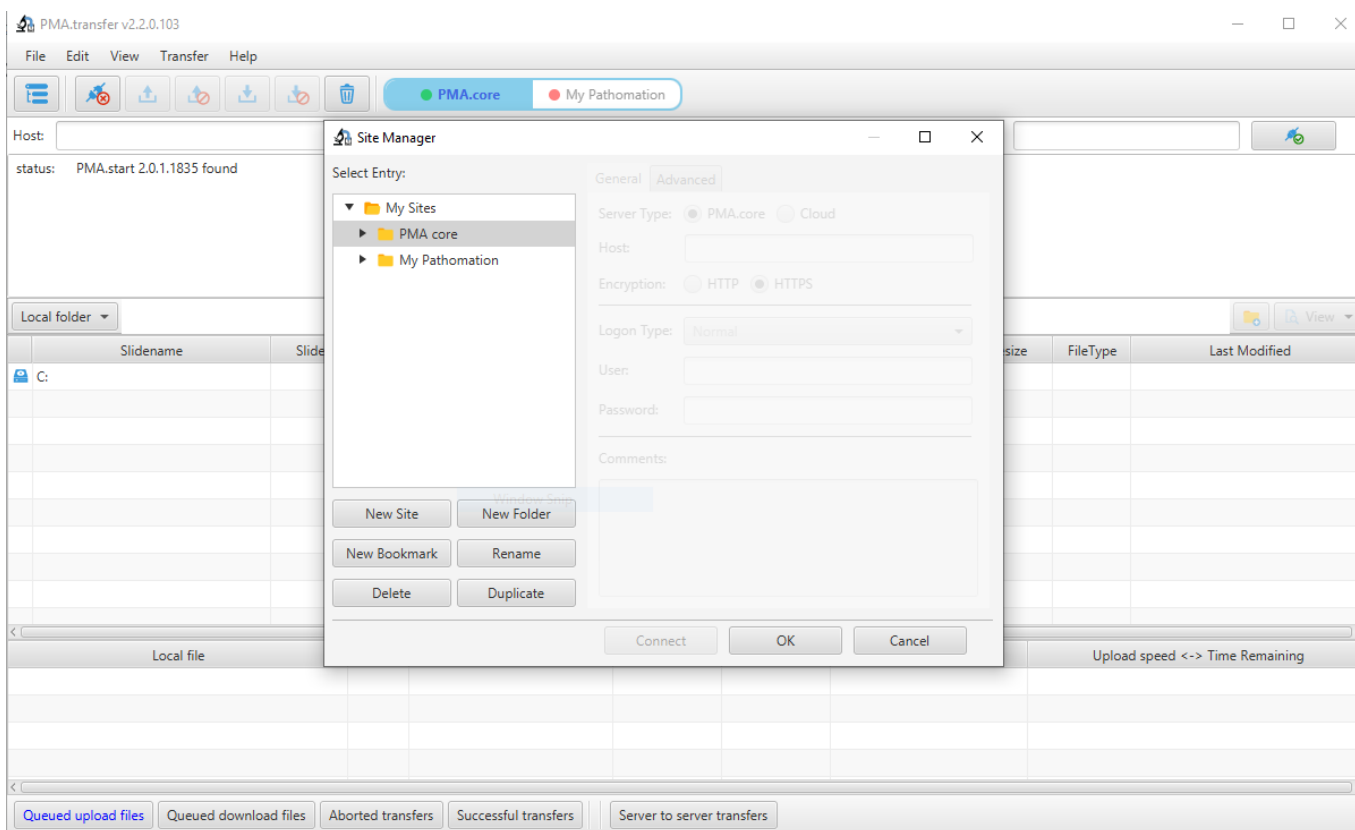
- click on button “Site Manager” (first to the left on the icons toolbar)



- click on Menu item “Site Manager” on Menu “File”.



- Keyboard shortcut “Ctrl + M”.



It enables end users to organize connection data into folders, sites, bookmarks in addition to a couple of others functionalities (rename, duplicate...) The data generated by the site manager is stored inside file “PMA.Transfer_data.json” on user’s default Windows directory :

Name	Date modified	Type	Size
★ Favorites	12/14/2018 11:42 ...	File folder	
🔗 Links	12/14/2018 11:42 ...	File folder	
🎵 Music	12/14/2018 11:42 ...	File folder	
☁ OneDrive	1/2/2019 1:40 AM	File folder	
🖼 Pictures	12/14/2018 11:42 ...	File folder	
🎮 Saved Games	12/14/2018 11:42 ...	File folder	
🔍 Searches	12/14/2018 11:42 ...	File folder	
📄 TwixTel	3/22/2018 12:45 PM	File folder	
📺 Videos	12/14/2018 11:42 ...	File folder	
📄 PMA.Transfer_data.json	1/7/2019 1:30 AM	JSON File	1 KB

The content of this file should not be modified!

From:
<https://docs.pathomation.com/PMA.transfer/> - **PMA.transfer**

Permanent link:
https://docs.pathomation.com/PMA.transfer/doku.php?id=about_site_manager

Last update: **2021/06/21 19:16**

