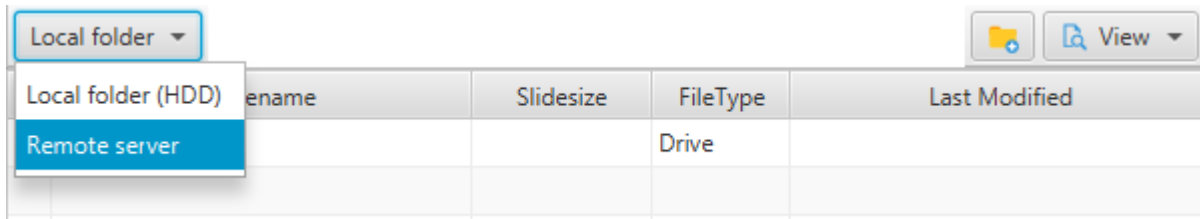
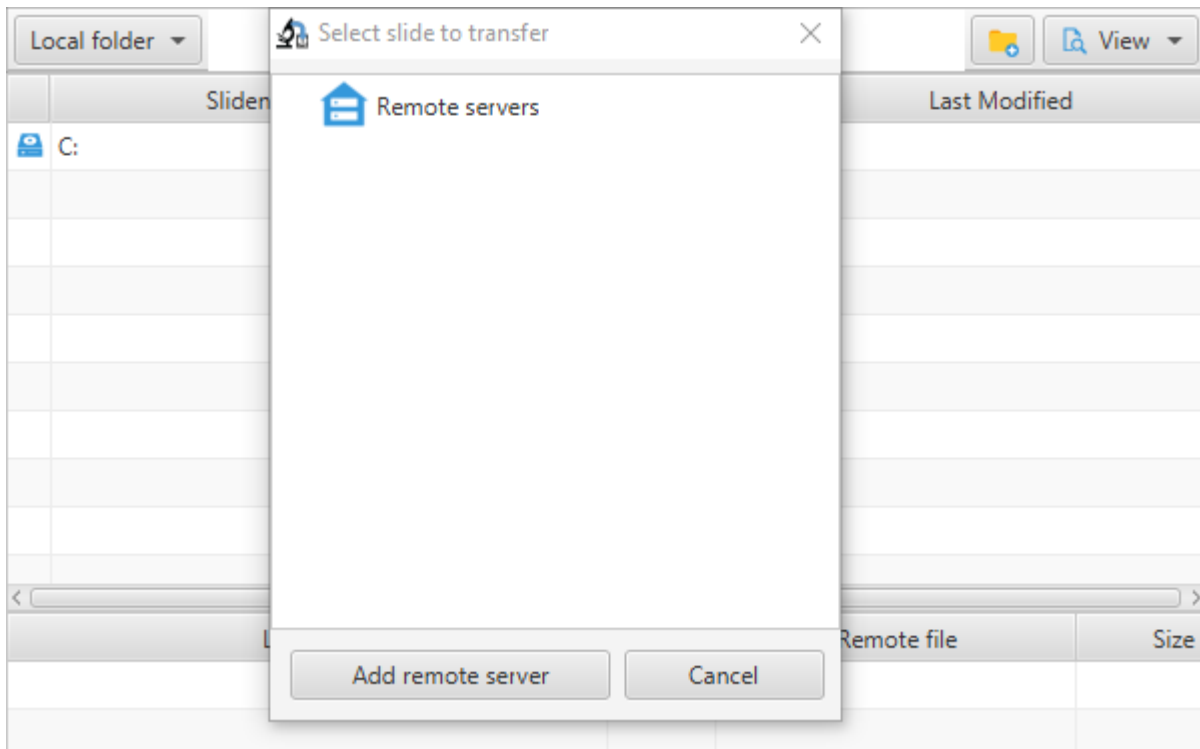


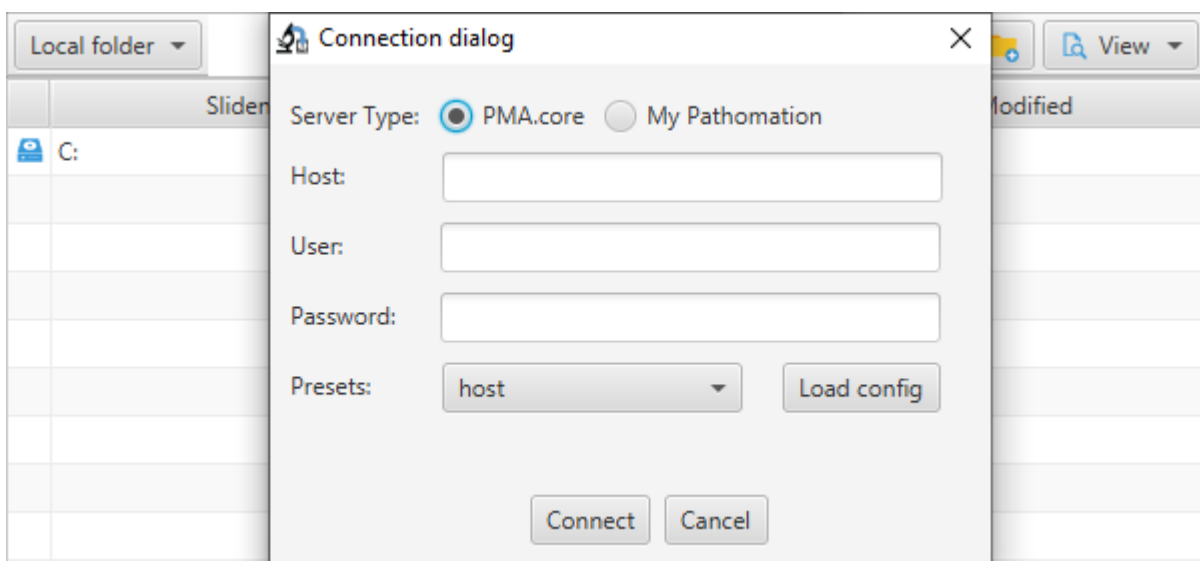
To connect to a remote server (for the purpose of a “server to server” transfer), you need to click on button “local folder” then select the menu item “Remote server” :



The following window opens up, option “Add remote server” should be selected :



Then a windows dialog opens up to define the connection information for the target server :



Last update: 2020/09/01 04:18 connection\_to\_remote\_site [https://docs.pathomation.com/PMA.transfer/doku.php?id=connection\\_to\\_remote\\_site&rev=1598923091](https://docs.pathomation.com/PMA.transfer/doku.php?id=connection_to_remote_site&rev=1598923091)

---

From: <https://docs.pathomation.com/PMA.transfer/> - **PMA.transfer**

Permanent link: [https://docs.pathomation.com/PMA.transfer/doku.php?id=connection\\_to\\_remote\\_site&rev=1598923091](https://docs.pathomation.com/PMA.transfer/doku.php?id=connection_to_remote_site&rev=1598923091)

Last update: **2020/09/01 04:18**

