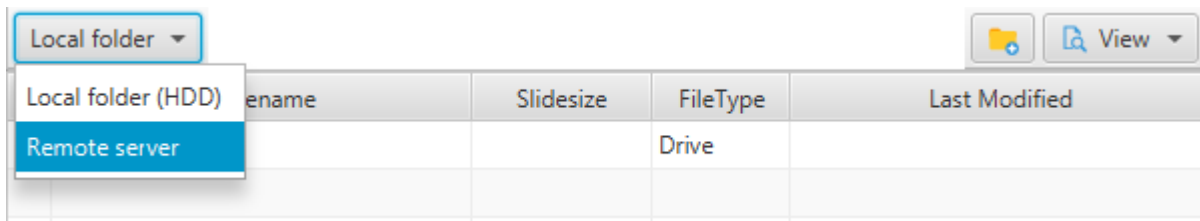
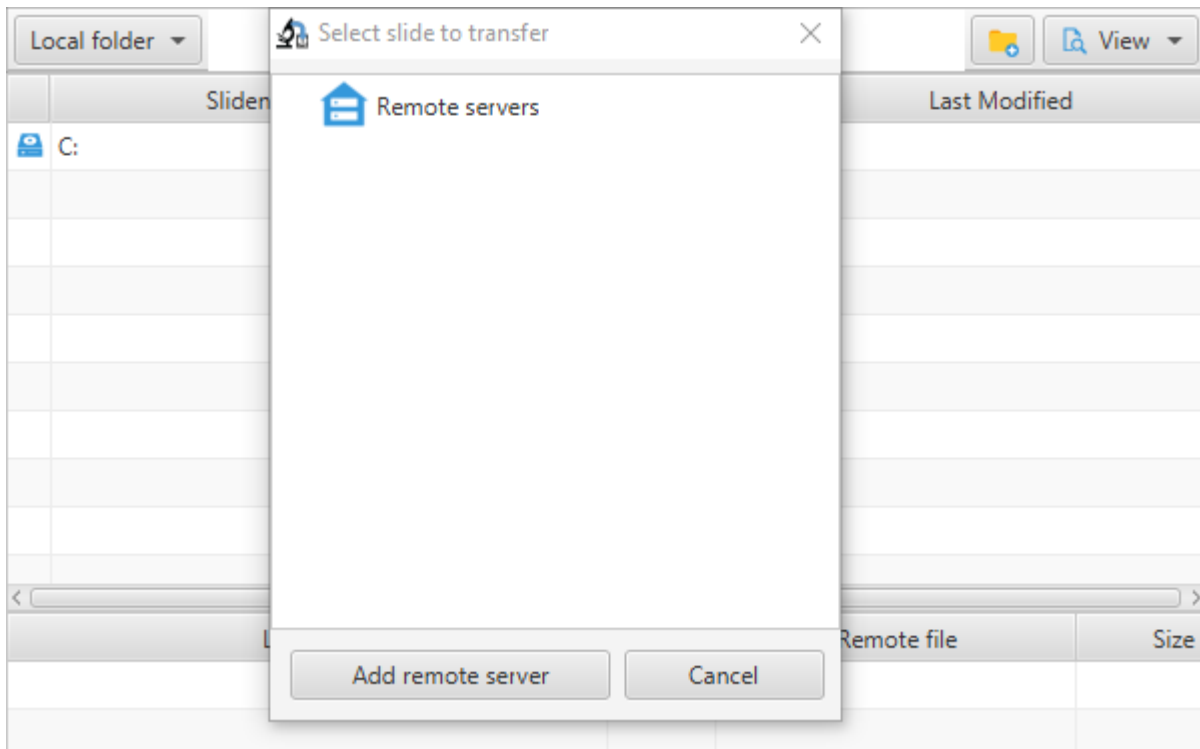


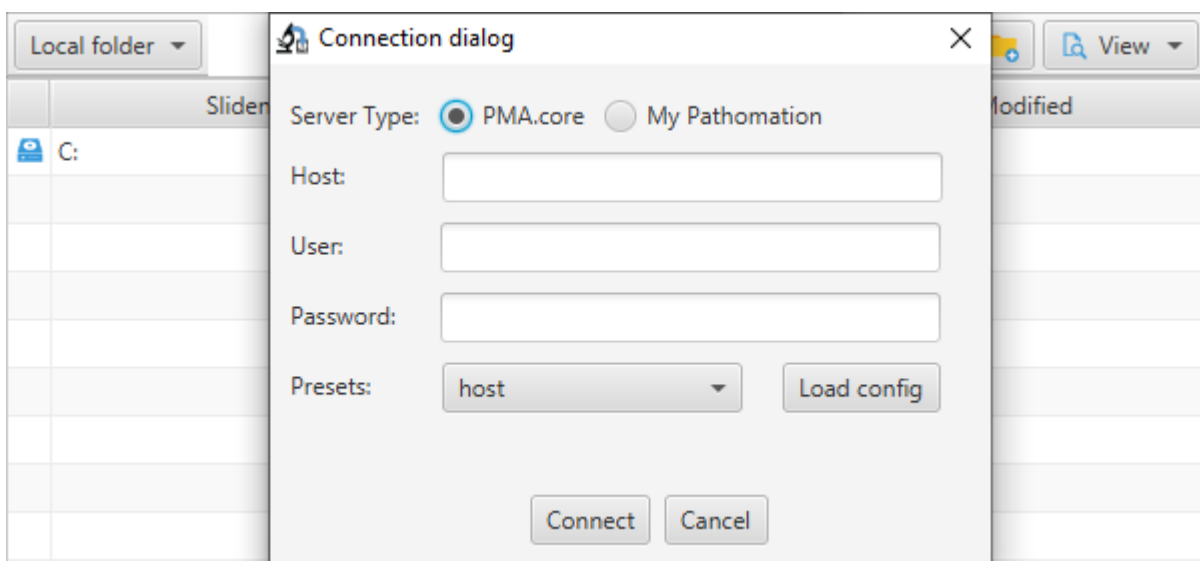
To connect to a remote server (for the purpose of a “server to server” transfer), you need to click on button “local folder” then select the menu item “Remote server” :



The following window opens up, option “Add remote server” should be selected :



Then a windows dialog opens up to define the connection information for the target server :



Last update: 2020/09/02 06:30 connection_to_remote_site https://docs.pathomation.com/PMA.transfer/doku.php?id=connection_to_remote_site&rev=1599017422

From:
<https://docs.pathomation.com/PMA.transfer/> - **PMA.transfer**

Permanent link:
https://docs.pathomation.com/PMA.transfer/doku.php?id=connection_to_remote_site&rev=1599017422

Last update: **2020/09/02 06:30**

