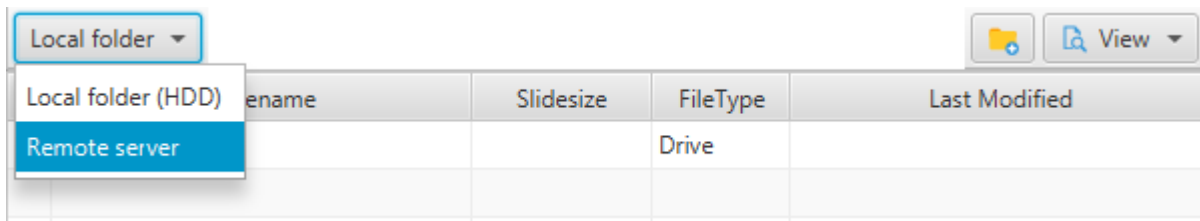
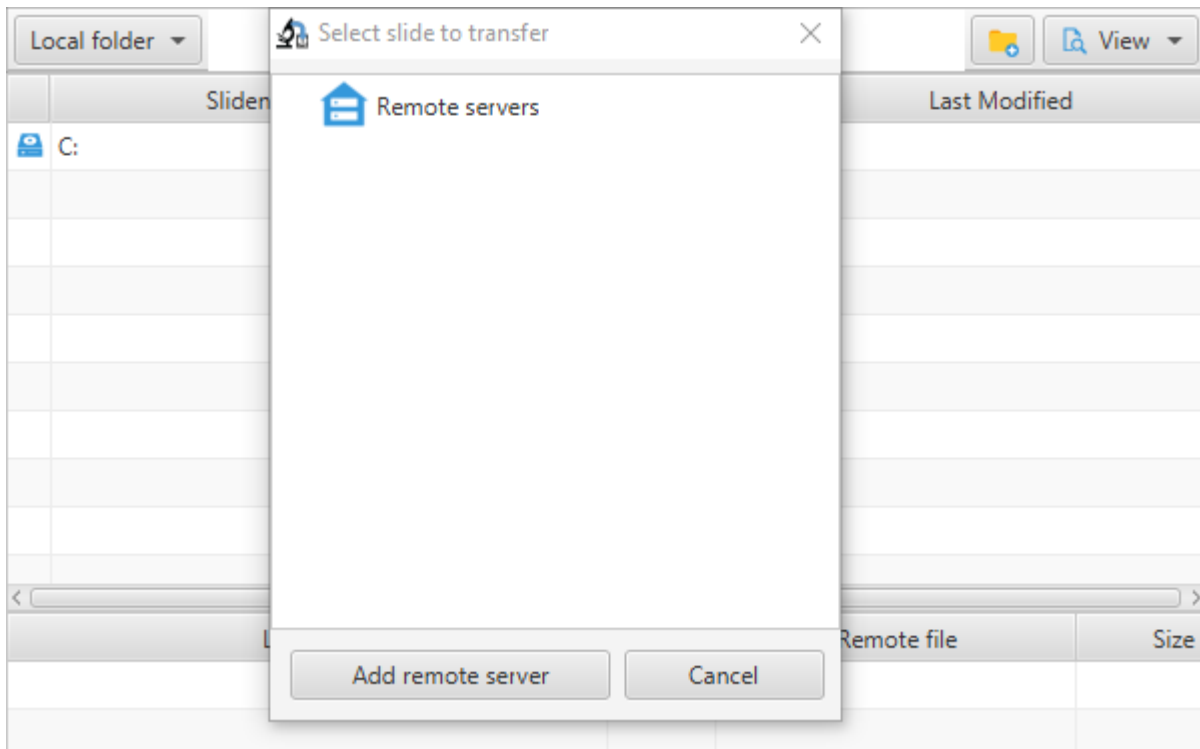


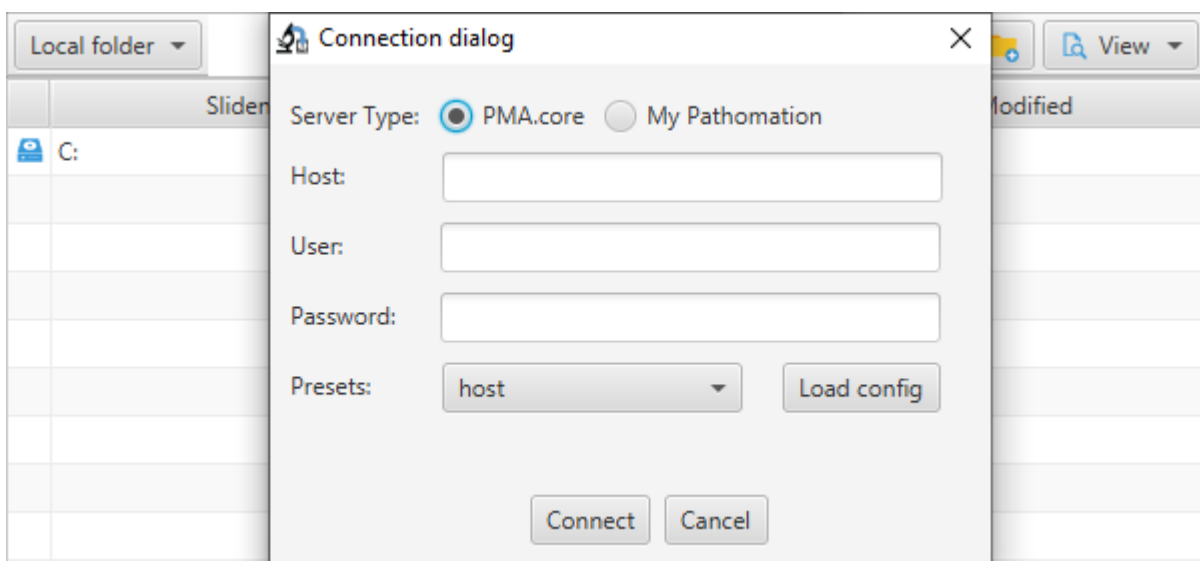
To connect to a remote server (for the purpose of a “server to server” transfer), you need to click on button “local folder” then select the menu item “Remote server” :



The following window opens up, option “Add remote server” should be selected :



Then a windows dialog opens up to define the connection information for the target server :



The end user can choose either to fill the connection details manually or load one of the configurations stored on the site manager. It's worth mentioning that when the “Server Type” radio button switches to “My Pathomation”, the text field “Host” is masked as it's not needed.

Last update: 2020/09/02 14:46 connection_to_remote_site https://docs.pathomation.com/PMA.transfer/doku.php?id=connection_to_remote_site&rev=1599047202

When the end user is done defining the connection details, he should click on connect to initiate a connection to the remote server

If the connection successful, the remote server is loaded on the tree view

From: <https://docs.pathomation.com/PMA.transfer/> - **PMA.transfer**

Permanent link: https://docs.pathomation.com/PMA.transfer/doku.php?id=connection_to_remote_site&rev=1599047202

Last update: **2020/09/02 14:46**

