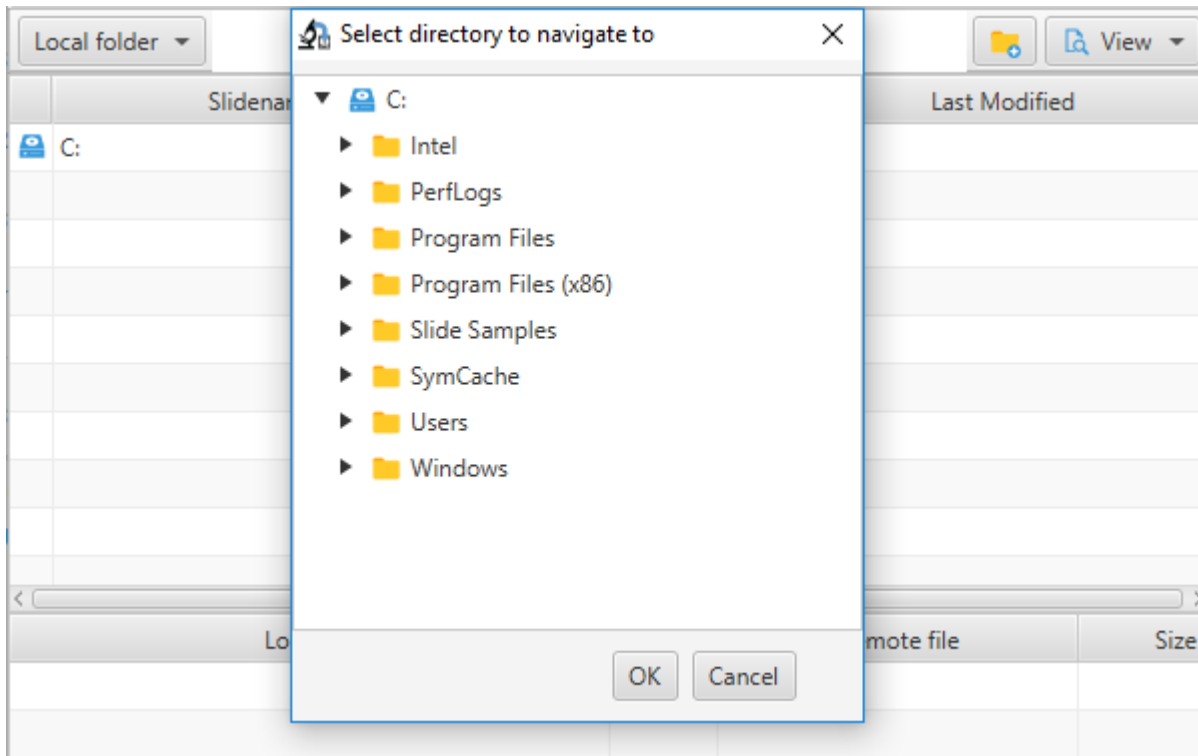


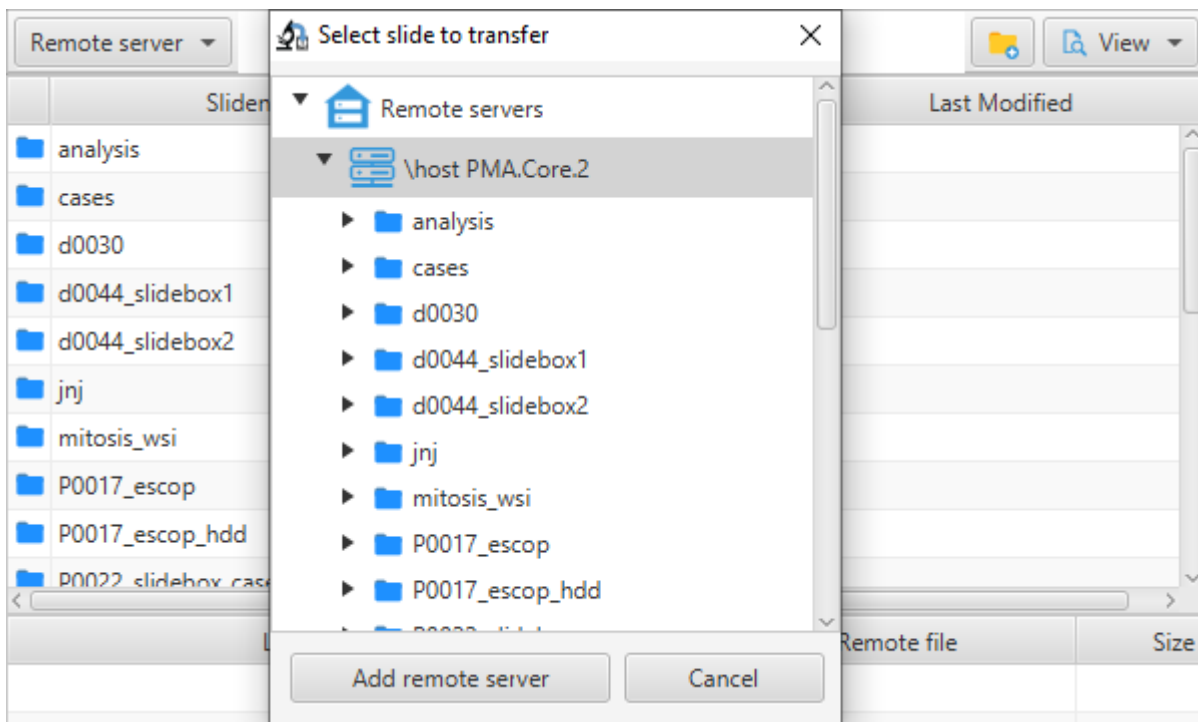
# Folders navigation tree

For local site connection :



Click on button "Local folder" opens a tree view window to select folder to navigate to. Action takes places by a click on button "OK", while "cancel" simply cancels operation.

For remote site connection :



Click on button "Remote server" opens a tree view window with the list of connected remote servers. A click on button "Add remote server" will guide the end user through the steps required to connect

to a new remote server, while click on "cancel" simply closes the tree view window.

From:

<https://docs.pathomation.com/PMA.transfer/> - **PMA.transfer**

Permanent link:

[https://docs.pathomation.com/PMA.transfer/doku.php?id=folders\\_navigation\\_tree](https://docs.pathomation.com/PMA.transfer/doku.php?id=folders_navigation_tree)

Last update: **2021/07/08 15:48**

