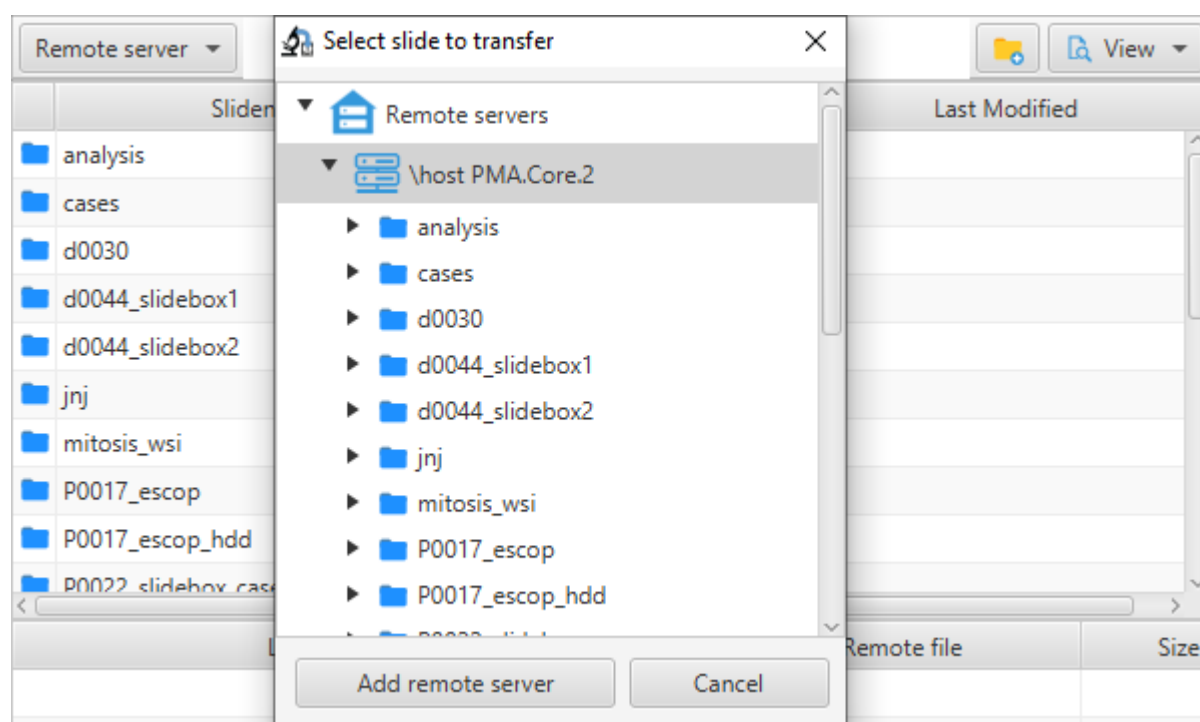


Folder navigation tree (remote)



Click on button “Remote Directory” opens a tree view window to select folder to navigate to. Action takes place by a click on button “OK”, while “cancel” simply cancels operation. It's worth also noting that the folder blue icon refers to a root directory, while the yellow icon refers to a non root one.

From:
<https://docs.pathomation.com/PMA.transfer/> - **PMA.transfer**

Permanent link:
https://docs.pathomation.com/PMA.transfer/doku.php?id=folders_navigation_tree_remote

Last update: **2021/07/08 15:50**

