

# Geo-replication and parallel uploads

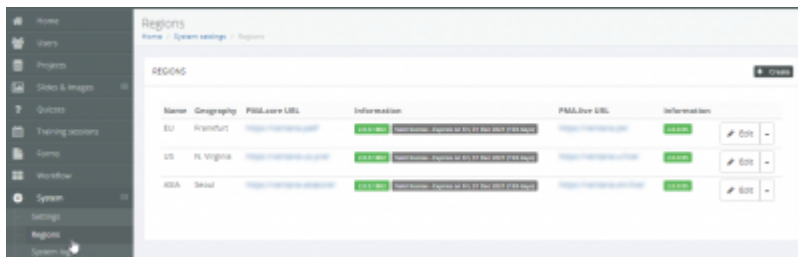
Sometimes you have slides that you want to upload to multiple destinations. Two examples of scenarios where this is appropriate may be:

- You're using [PMA.control](#) on a global scale. Your PMA.control setup connects to multiple [PMA.core](#) instances for geo-replication purposes. Each PMA.core instance therefore must have access to the same slides locally.
- You're setting up one or more instances of [PMA.slidebox](#). As you're explaining to the various instructors that are coming to your event how they can each manage their own slides, you wish to seed a number of root-directories with a pre-defined demonstration dataset.

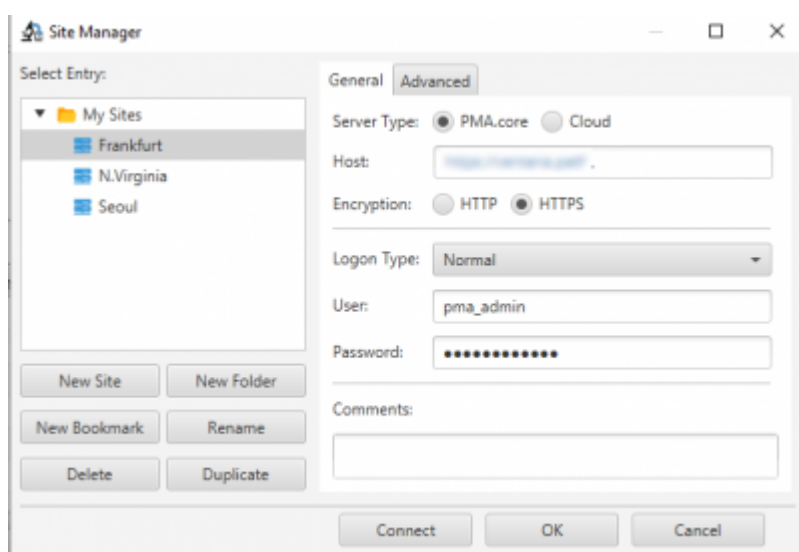
In both scenarios, the solution is work via the [site manager](#) to register your target locations, and to subsequently run multiple PMA.transfer instances side by side.

## Geo-replication (multiple PMA.core instances)

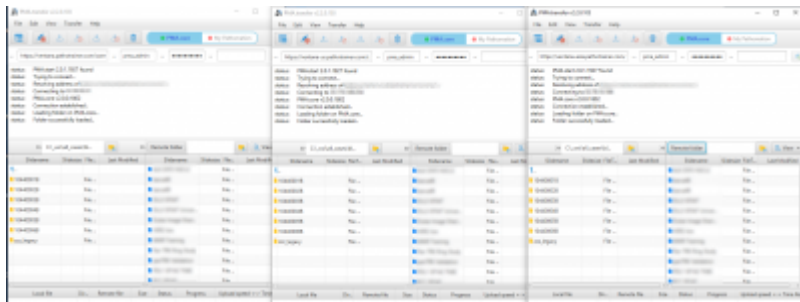
Within your PMA.control installation, login with an administrative account and determine what the PMA.core instances are that accomplish respective geo-replication.



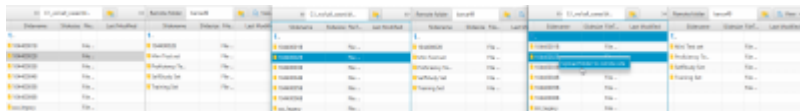
Copy the PMA.core instance information (with appropriate credentials for each) to the site manager in PMA.transfer. At this point, you only need a single instance of PMA.transfer open.



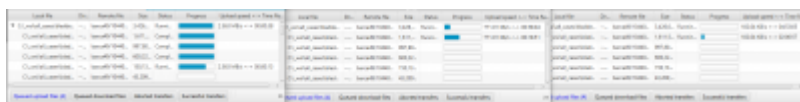
Make sure the site manager has the correct information stored, and start additional instances of PMA.transfer as needed. Arrange them on your screen so you can conveniently manage them simultaneously side by side (a second monitor may come in handy).



Once you're connected to each PMA.core, set your source folder to the same location in each PMA.transfer instance. Then select the right target folder for each respective PMA.core instance, and initiate the transfers.



You'll notice quickly that the transfer doesn't proceed at the same pace for each PMA.transfer instance. Indeed, that is the purpose of geo-replication in the first place: to make sure that all the slides are available at each geographic location and can be accessed by end-users with the same performance, whether somebody resides in Tokyo, Japan, or Sao Paola, Brazil.



### Parallel uploads (one PMA.core instance, multiple root-directory targets)

From: <https://docs.pathomation.com/PMA.transfer/> - PMA.transfer

Permanent link: <https://docs.pathomation.com/PMA.transfer/doku.php?id=geo-replication&rev=1624295246>

Last update: 2021/06/21 20:07

