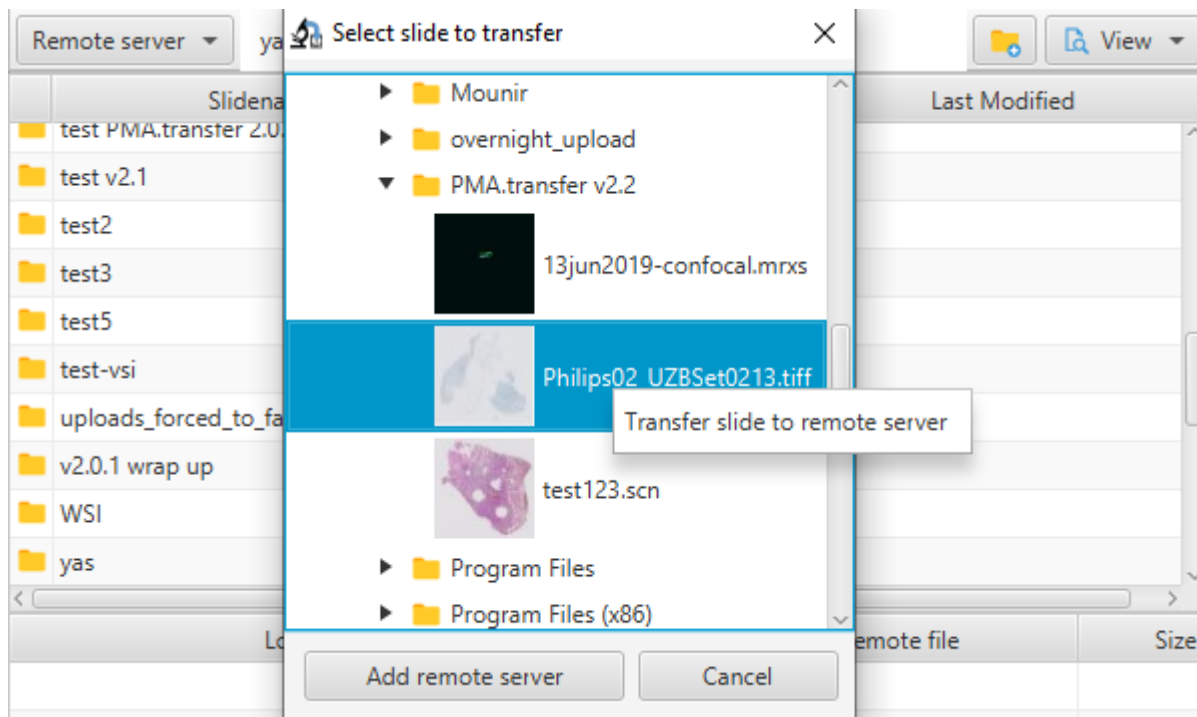


## Initiating a transfer




In the context of PMA.transfer, a transfer refers to the action of transferring a slide from a remote server (either PMA.core or My Pathomation) to a remote server (either PMA.core or My Pathomation). There are three options to initiate a server to server transfer :

- On the remote servers tree view, select a slide then perform a mouse right click and select option "Transfer slide to remote server"



- When a remote server is loaded on the left table view, mouse right click inside the left table view borders, then select "transfer slide(s) to remote slide" context menu item to transfer the selected slide to the remote site on the right table view. It's worth mentioning that it's possible to select multiple slides via Ctrl keyboard button to perform a bulk transfer

Remote server: yassine/PMA.transfer v2.2				Remote folder: P0061_767CJN/folder1			
Slidename	Slidesize	FileType	Last Modified	Slidename	Slidesize	FileType	Last Modified
13jun2019-confocal.mrxs	973,993,181	MRXS File	Thu Jul 30 20:26:07 WAT 2020	8-1780108 HE.mrxs	793,222,187	MRXS File	Wed Aug 26 01:53:33 WAT 2020
Philips02_UZBSet0213.tiff	94,223,942	TIFF File	Wed Jul 29 12:31:07 WAT 2020	CMU-1.mrxs	565,102,675	MRXS File	Wed Aug 26 19:09:18 WAT 2020
test123.scn	291	SCN File	Wed Jul 29 12:10:41 WAT 2020	CMU-2.svs	390,750,635	SVS File	Wed Aug 26 01:54:20 WAT 2020
				Leica-Fluorescence-1.scn	21,740,518	SCN File	Wed Aug 26 19:16:36 WAT 2020
				Zeiss-1-Merged.zvi	10,185,728	ZVI File	Wed Aug 26 01:54:26 WAT 2020

- Drag & drop : drag a slide from the left, then drop it on the right. The cursor switches to  on drag,  on drop and  when an operation is forbidden.

From:

<https://docs.pathomation.com/pma.transfer/> - **PMA.transfer**

Permanent link:

[https://docs.pathomation.com/pma.transfer/doku.php?id=initiating\\_a\\_transfer](https://docs.pathomation.com/pma.transfer/doku.php?id=initiating_a_transfer)

Last update: **2021/07/08 15:47**

