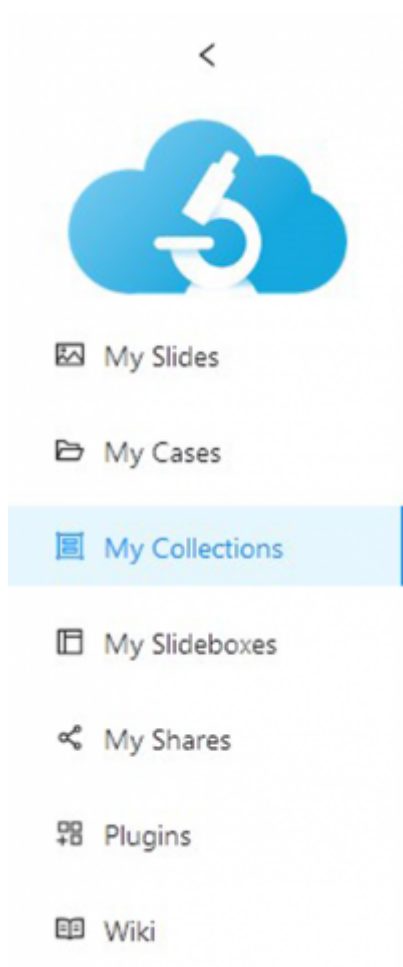
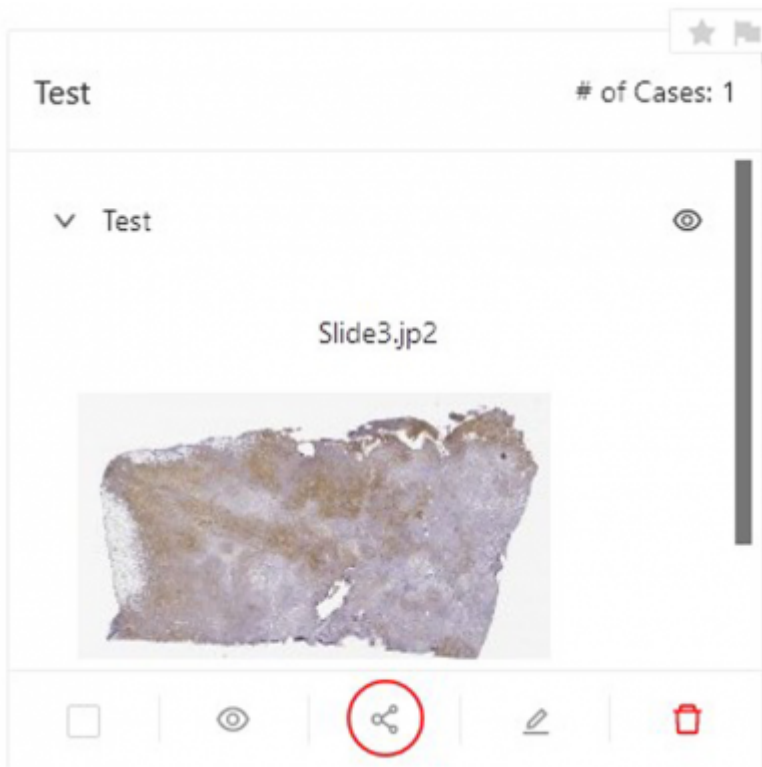


# How to share a collection?

1. Go to your collections via “My collections” on the sidebar.



2. All your collections are shown in the gallery. On every collection, you can see the share button. Click share button and a new window pops up.



3. There are different ways to share your collection.

1. You can copy the link and share it with others
2. You can embed your slide in your own web content
3. You can generate a QR-code for your slide
4. You can email the link of shared slide
5. You can directly send the link of shared slide via various social network service such as *Facebook, Twitter, WhatsApp, Messenger or LinkedIn.*

Also you can change the visibility option of your share. **Unlisted shares** can only be accessed by users with a valid link. **Public shares** can also be accessed by link, but are accessible from public listings too and anyone can view them.

Choose the options that suits your need best.

# Share Test



Test

Created on Feb 10, 2022, 17:37

Contains 1 slide(s) and 1 case(s)

## Share method

Visibility ⓘ:  Public  Unlisted



Link



Embed



QRcode



Email



Facebook



Twitter



WhatsApp




Messenger

[ADVANCED \(more options and properties\)](#)

[Close](#)

4. By clicking on “ADVANCED (more options and properties)” you can finetune your share. You can password-protect your share, set an expiration date for your share or modify viewport to your needs.

### Advanced sharing

 **Test**  
Created on Feb 10, 2022, 17:37  
Contains 1 slide(s) and 1 case(s)

#### Share method

Visibility:  Public  Unlisted

-  Link
-  Embed
-  QRcode
-  Email
-  Facebook
-  Twitter
-  WhatsApp
-  Messenger
-  LinkedIn

#### Share options

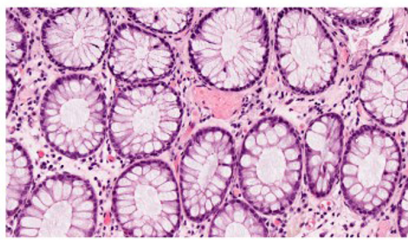
Password-protect the share:

Put an expiration on the share:

#### Viewport options



Channels  
Default   
Default   
Time frame: 1 / 2  
Z-stack: 2 / 2



Overview: Visible  Collapsed

Dimensions control: Visible  Collapsed



Barcode: Visible  Collapsed

Rotation control: Visible  Collapsed

Filename: Visible  Collapsed

Scale line: Visible  Collapsed

Snapshot button: Visible



Color adjustments: Visible

From: <https://docs.pathomation.com/my/> - My Pathomation

Permanent link: [https://docs.pathomation.com/my/doku.php?id=how\\_to\\_share\\_a\\_collection&rev=1644842397](https://docs.pathomation.com/my/doku.php?id=how_to_share_a_collection&rev=1644842397)

Last update: 2022/02/14 15:39

