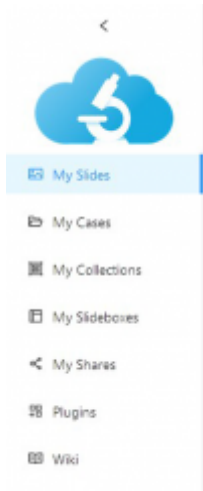


# How to share a slide?

1. Go to your slides via “My slides” on the sidebar.



2. The standard view setting is list view, in this view you need to click the ... icon next to the slide and the share button will appear. If you work in the gallery view you can see the share button next to the slide. Click the share button and a new window pops up.



3. There are different ways to share your slide.

## Share Slide3.jp2



My Pathomation/Slide3.jp2

### Share method

Visibility ⓘ:  Public  Unlisted



Link



Embed



QRcode



Email



Facebook



Twitter



WhatsApp



Messenger

[ADVANCED \(more options and properties\)](#)

[Close](#)

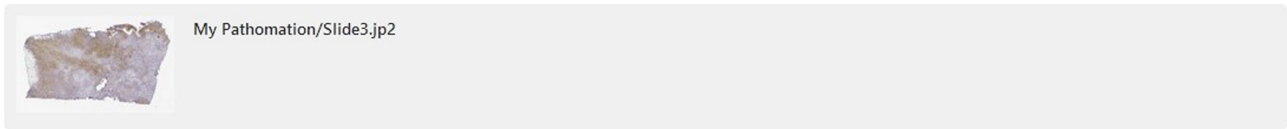
1. You can copy the link and share it with others
2. You can embed your slide in your own web content
3. You can generate a QR-code for your slide
4. You can email the link of shared slide
5. You can directly send the link of shared slide via various social network service such as *Facebook, Twitter, WhatsApp, Messenger* or *LinkedIn*. Watch our explanatory video here [https://youtu.be/Y73I7nm\\_8d8](https://youtu.be/Y73I7nm_8d8)

Also you can change the visibility option of your share. **Unlisted shares** can only be accessed by users with a valid link. **Public shares** can also be accessed by link, but are accessible from public listings too and anyone can view them.

Choose the options that suits your need best.

4. By clicking on “ADVANCED (more options and properties)” you can finetune your share. You can password-protect your share, set an expiration date for your share or modify viewport to your needs.

### Advanced sharing



Share method

Visibility :  Public  Unlisted

- Link
- Embed
- QRcode
- Email
- Facebook
- Twitter
- WhatsApp
- Messenger
- LinkedIn

### Share options

Password-protect the share:

Put an expiration on the share:

### Viewport options

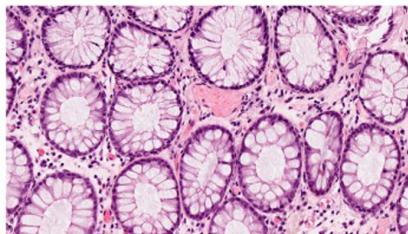


Channels

- Default
- Default

Time frame: 1 / 2

Z-stack: 2 / 2



Overview : Visible  Collapsed

Dimensions control : Visible  Collapsed



Barcode : Visible  Collapsed

Rotation control : Visible  Collapsed

Filename : Visible  Collapsed

Scale line : Visible  Collapsed

Snapshot button : Visible



Color adjustments : Visible

From: <https://docs.pathomation.com/my/> - My Pathomation

Permanent link: [https://docs.pathomation.com/my/doku.php?id=how\\_to\\_share\\_a\\_slide&rev=1677138604](https://docs.pathomation.com/my/doku.php?id=how_to_share_a_slide&rev=1677138604)

Last update: 2023/02/23 10:50

