

Integrating Your Interactive Slides into Powerpoint.

It's very easy to boost your powerpoint quality with [sharing a slide](#) with a QR code that people can scan and interact with on their phones and laptops.

But we can go one step further

In this article you will learn how to integrate a fully interactive slide directly into a powerpoint slide that you can navigate during your talk without ever leaving the presentation.

Video Guide

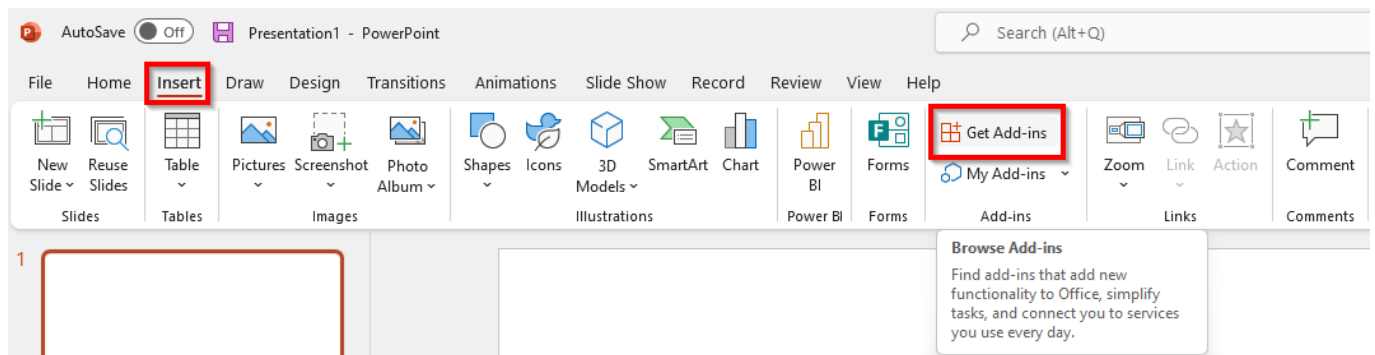
This helpful video explains how to get started:

<https://www.youtube.com/watch?v=hTghEqccVBk&t=5s>

Or if you'd prefer written instructions:

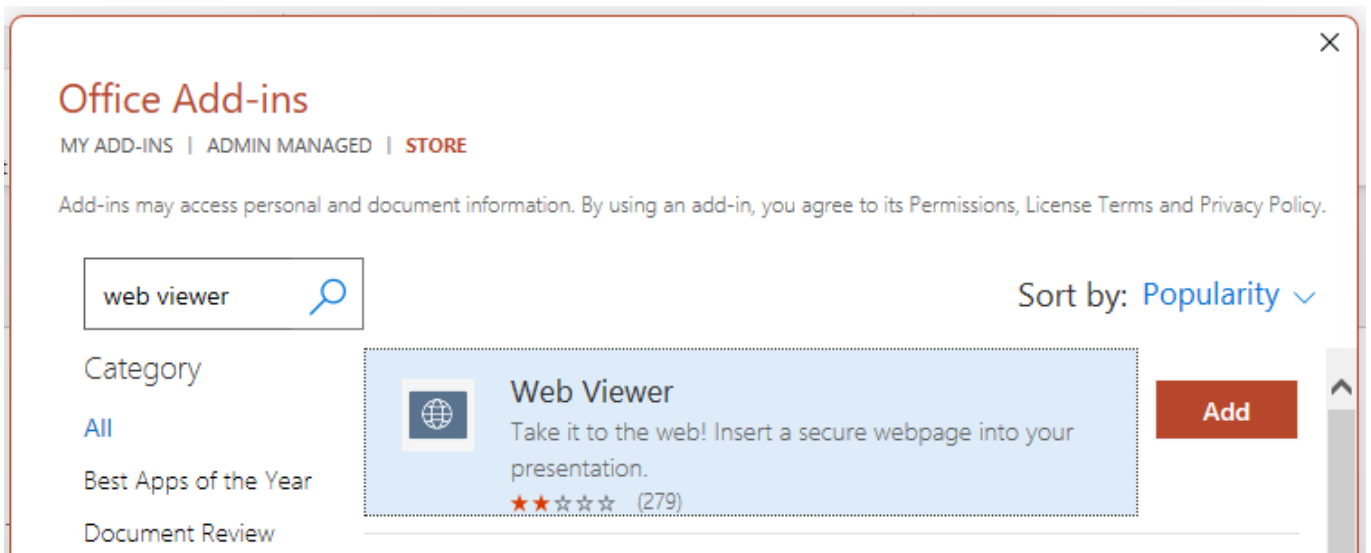
Walkthrough

Installing Web Viewer Plugin 1) First off you'll need Web Viewer plugin for Microsoft Powerpoint. You can search and download this from: - Powerpoint via the 'Insert' tab and clicking 'Get Add Ins'



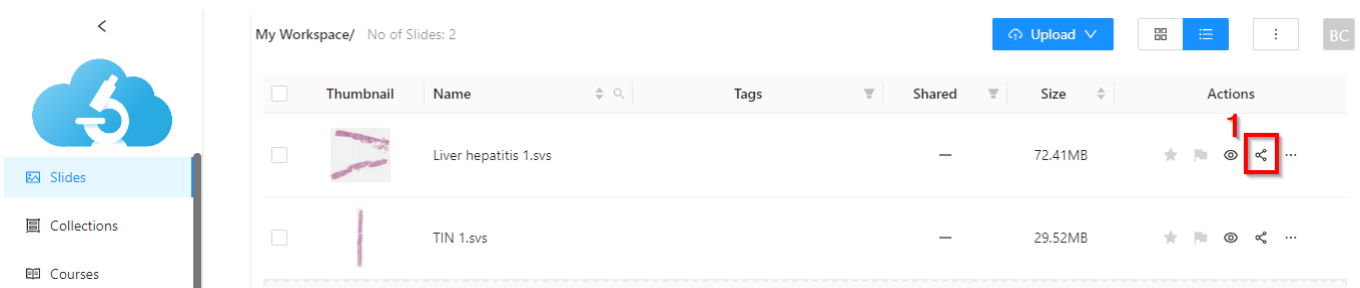
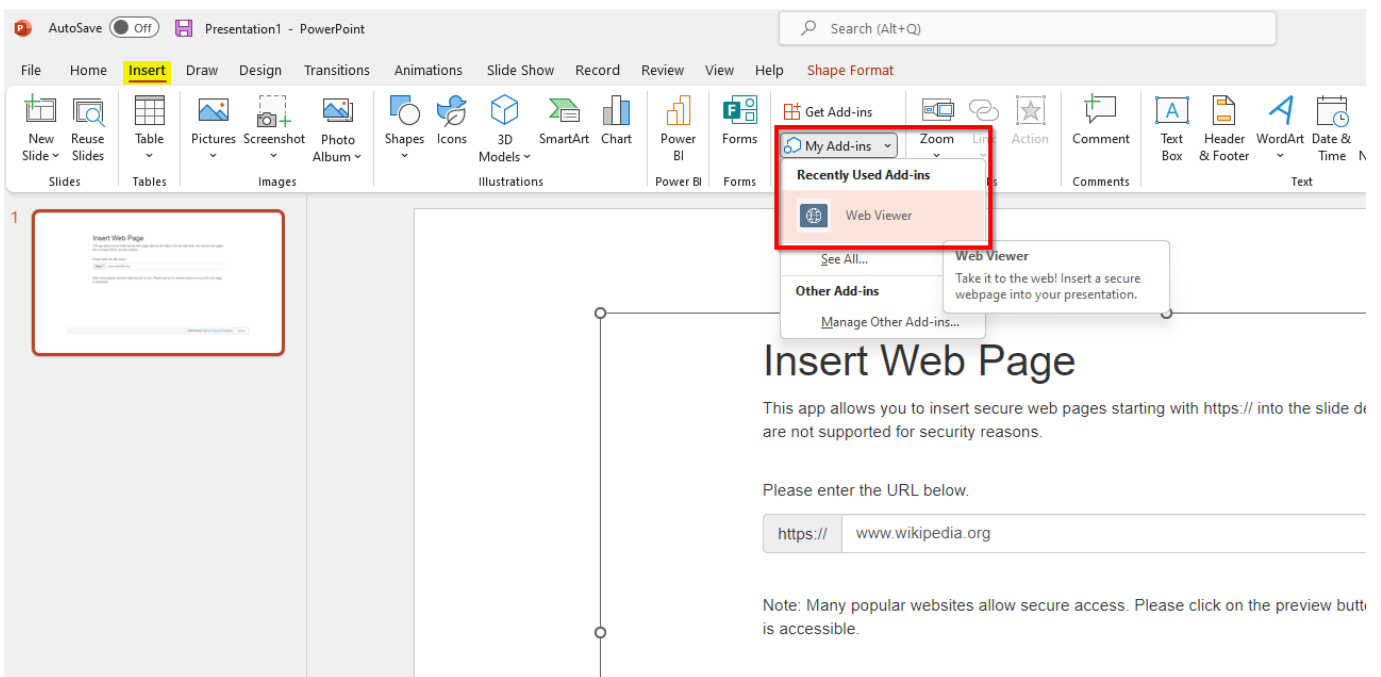
- Or the online office store

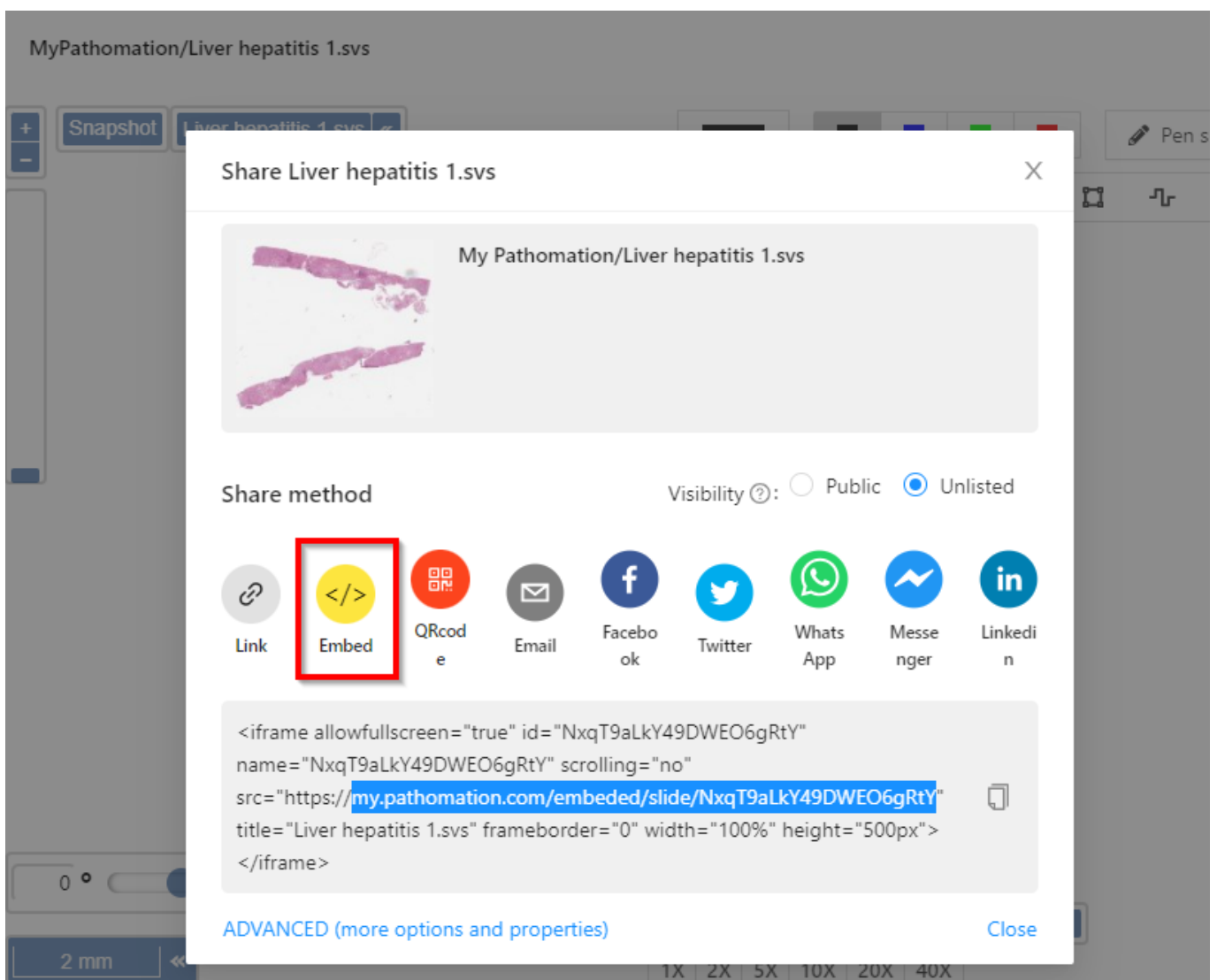
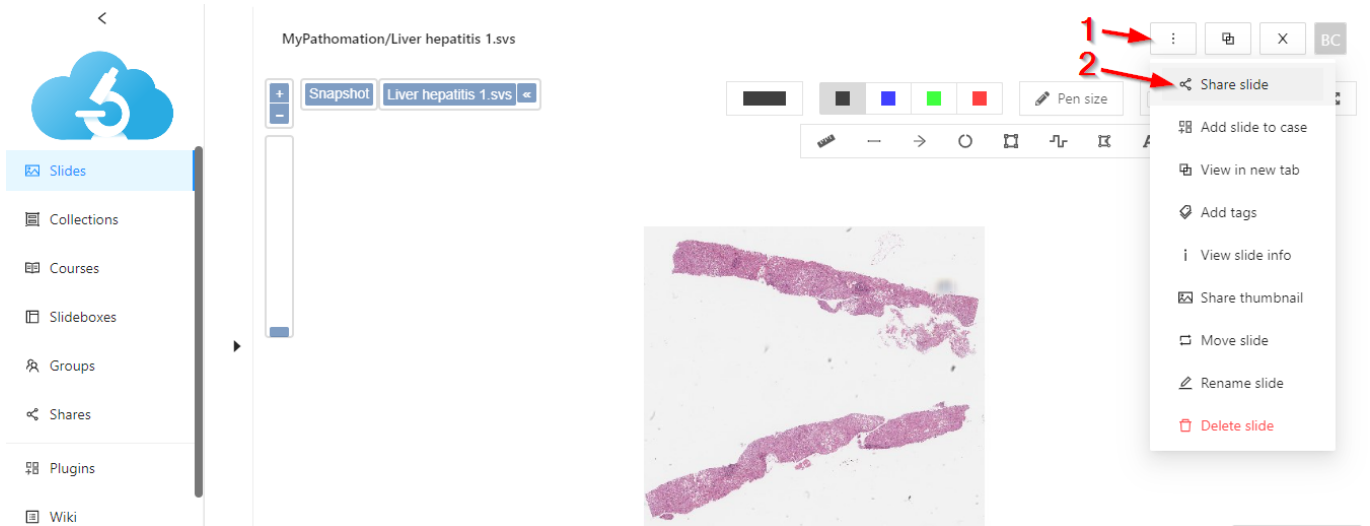
<https://appssource.microsoft.com/en-us/product/office/WA104295828?tab=Overview>



- 2) Click Add, and follow the installation steps
- 3) Restart Powerpoint to complete the installation

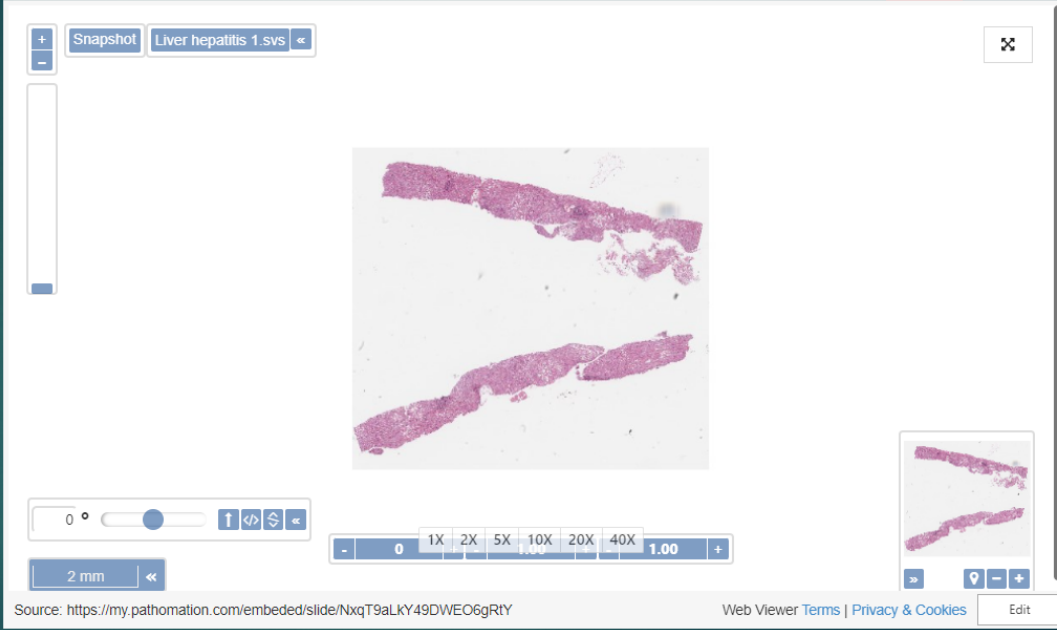
Inserting Your Slide





Hi, welcome to my powerpoint

MY LIVE SLIDE IS
ON THE RIGHT →



Source: <https://my.pathomation.com/embedded/slide/NxqT9aLkY49DWEO6gRtY> Web Viewer [Terms](#) | [Privacy & Cookies](#) [Edit](#)

From: <https://docs.pathomation.com/my/> - **My Pathomation**

Permanent link: https://docs.pathomation.com/my/doku.php?id=integrating_an_interactive_slide_into_powerpoint&rev=1706706143

Last update: **2024/01/31 16:02**

