

Integrating Your Interactive Slides into PowerPoint.

It's very easy to boost your PowerPoint quality with [sharing a slide](#) with a QR code that people can scan and interact with on their phones and laptops.

But we can go one step further

In this article you will learn how to integrate a fully interactive slide directly into a PowerPoint slide that you can navigate during your talk without ever leaving the presentation.

Video Guide

This helpful video explains how to get started:

<https://www.youtube.com/watch?v=hTghEqccVBk&t=5s>

Or if you'd prefer written instructions:

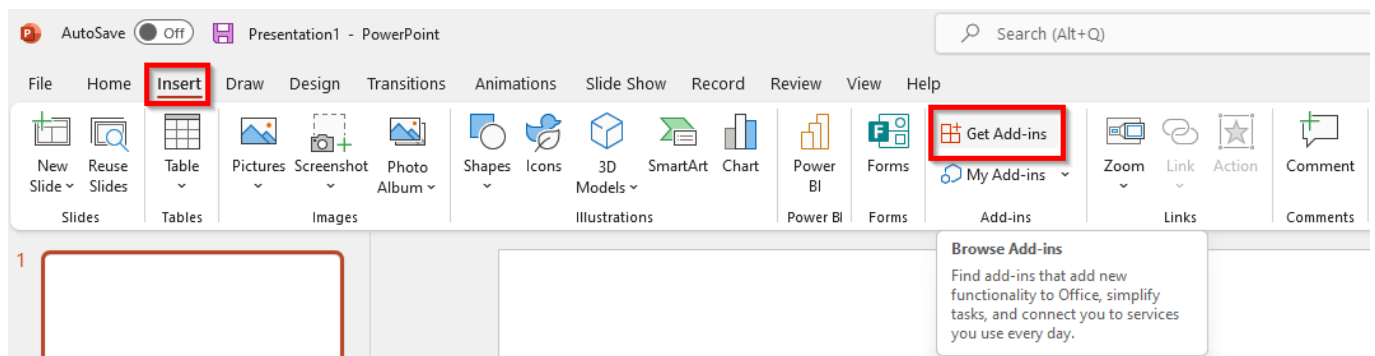
Walkthrough

Installing the PowerPoint Web Viewer Plugin

1) First off you'll need Web Viewer plugin for Microsoft PowerPoint

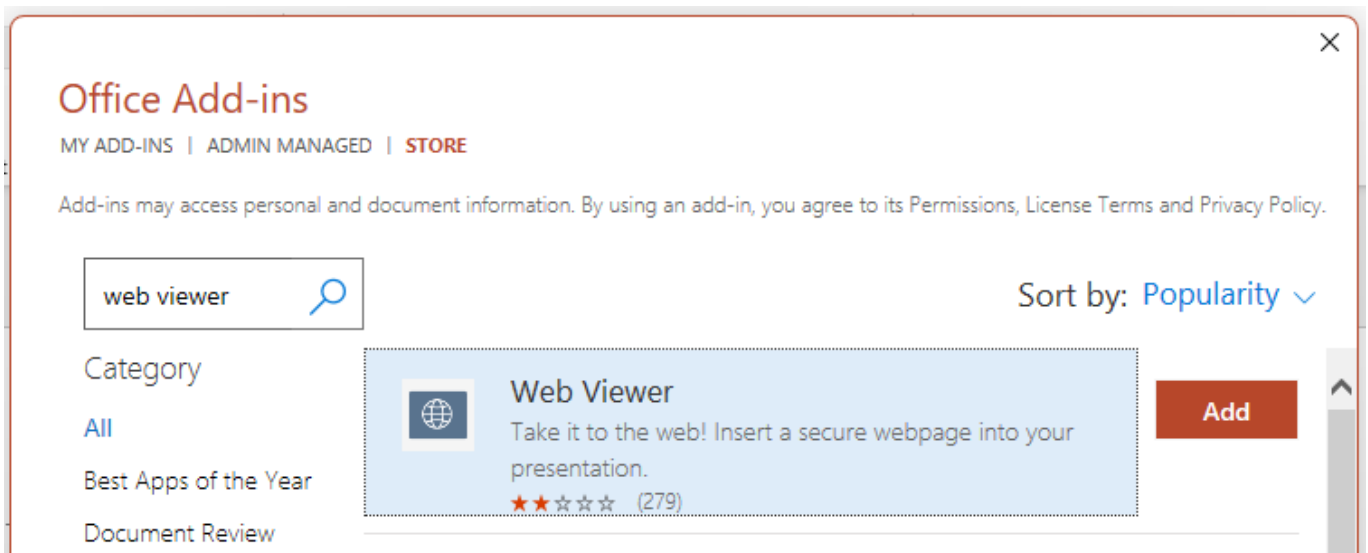
You can search and download this from:

- PowerPoint via the 'Insert' tab and clicking 'Get Add Ins'



- Or the online office store

<https://appssource.microsoft.com/en-us/product/office/WA104295828?tab=Overview>



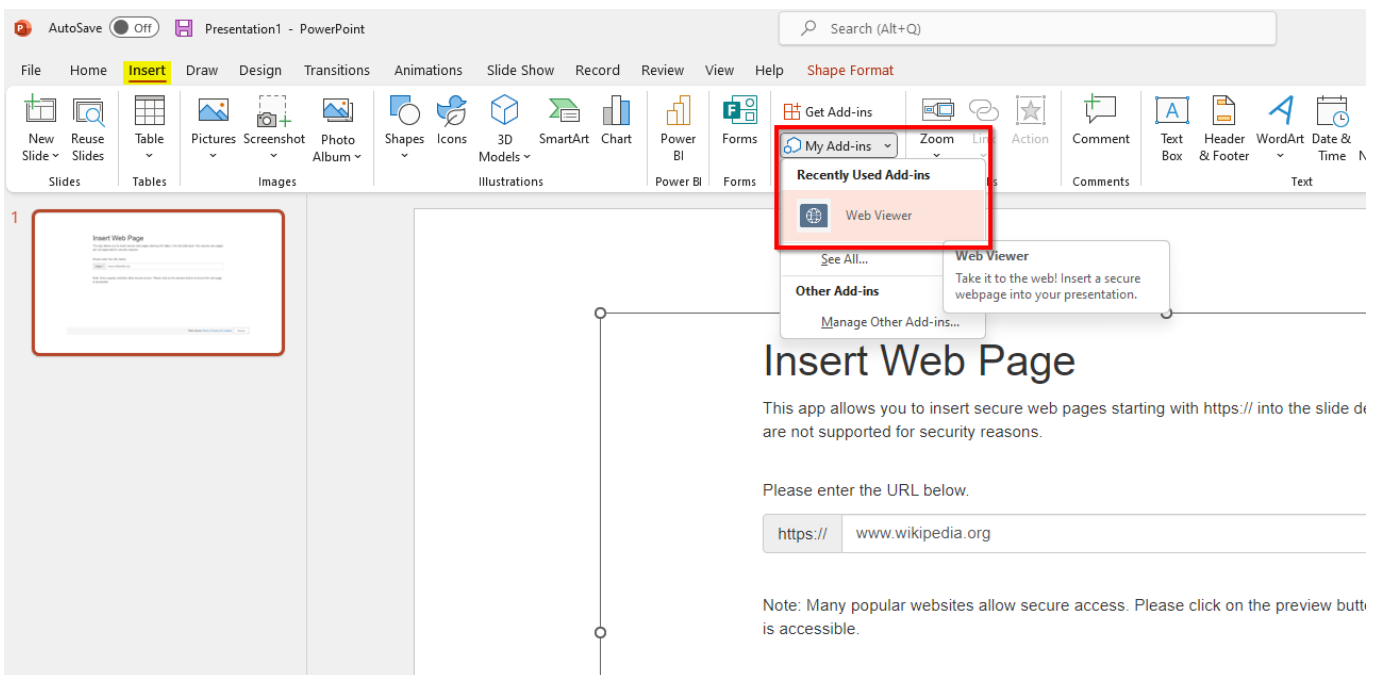
2) Click Add, and follow the installation steps

3) Restart Powerpoint to complete the installation

Inserting Your Slide

4) First, insert a Web Viewer window into a PowerPoint presentation by clicking My Add Ins in the Insert tab.

5) Then select Web Viewer. The box will appear with a space to input a web address. This is where your slide link will go.

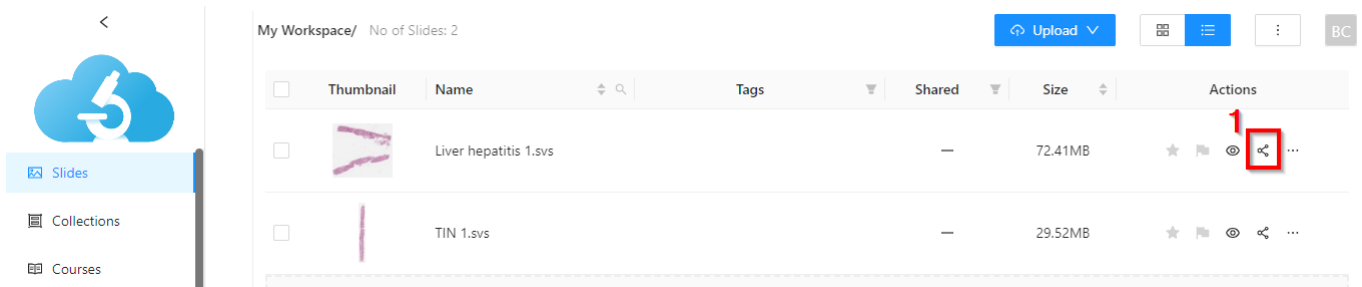


Creating a Slide Link

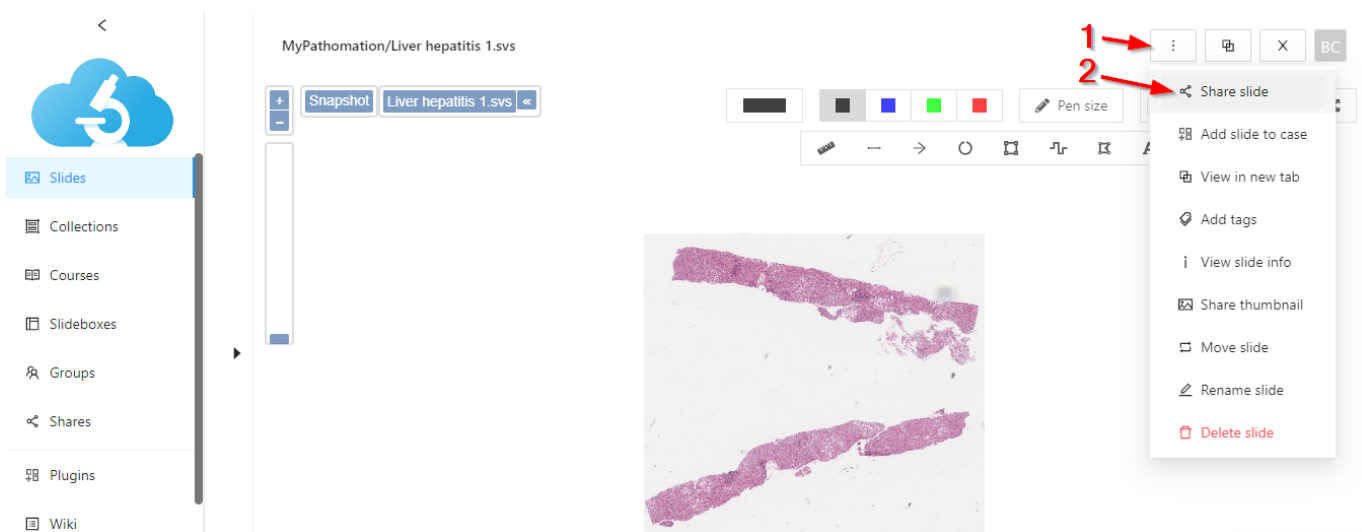
6) In My Pathomation, navigate to the slide you want to display in your PowerPoint presentation

7) Open up the share menu for that slide.

You can do this in A) The file navigator by pressing the share button [1]



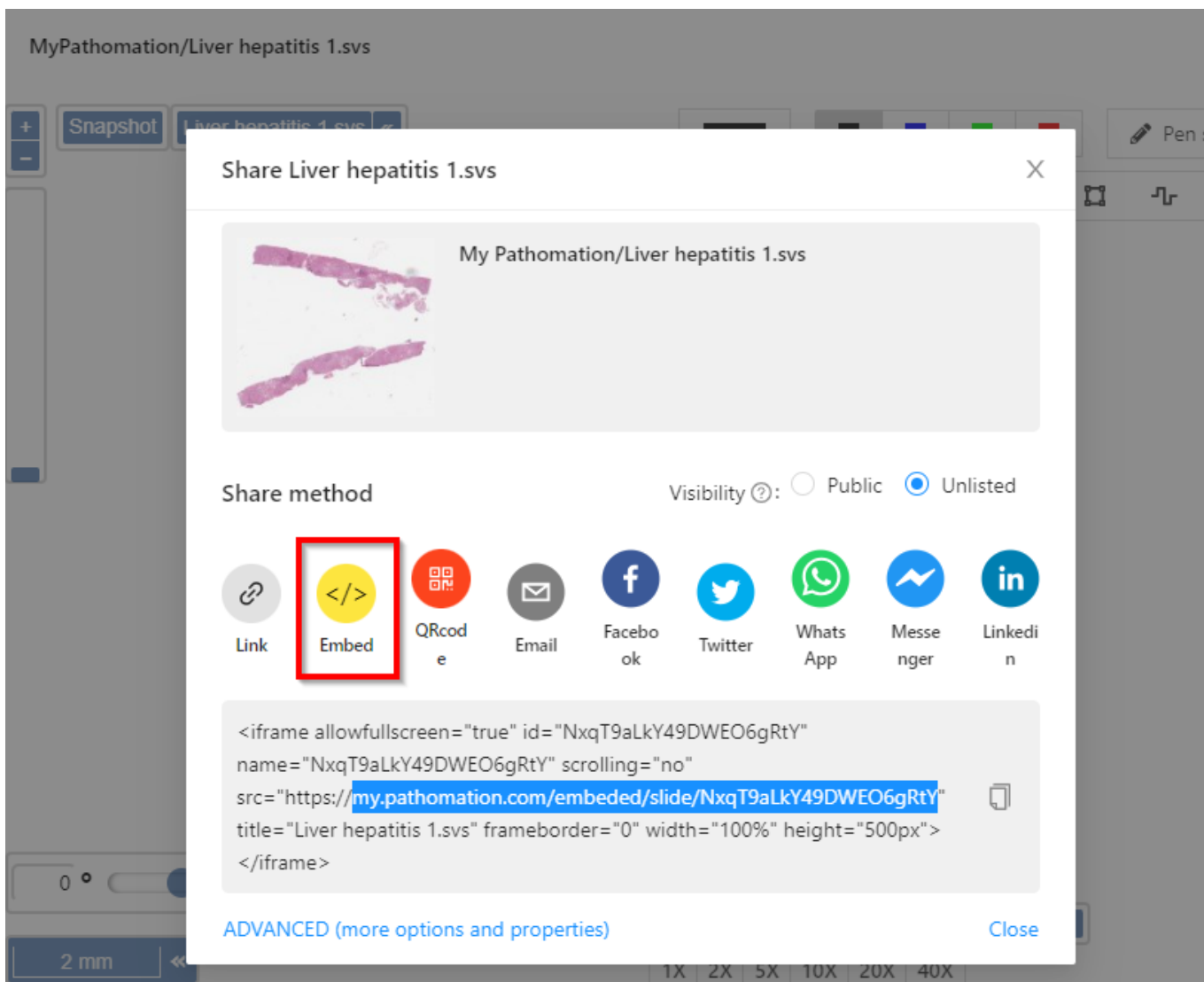
or B) in the viewport of a slide by clicking the three dots button [1] and share slide [2]



8) In the share menu, click the “Embed” option to generate a link

9) Copy the link text highlighted in blue next to src=.

Important: Copy only the part of the link AFTER the “https://” otherwise the image will not load

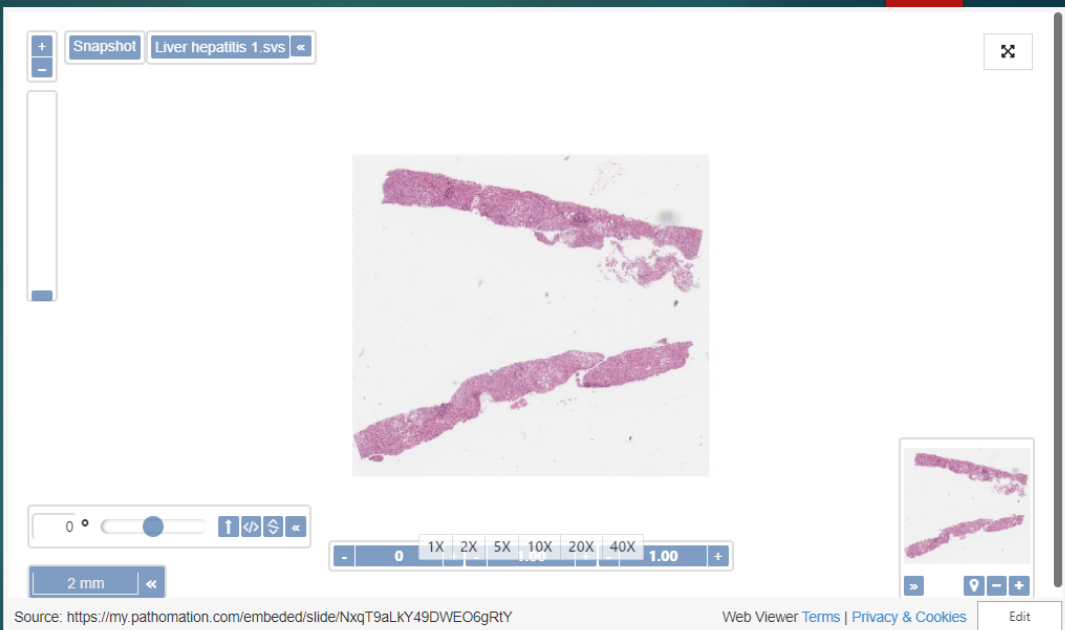


10) Paste it into the Web Viewer window you created in PowerPoint and hit preview to check it works ok.

It should look something like this:

Hi,
welcome
to my
powerpoint

MY LIVE SLIDE IS
ON THE RIGHT →



The screenshot shows a web viewer interface for a histology slide. On the left, there is a dark green sidebar with the text 'Hi, welcome to my powerpoint' and 'MY LIVE SLIDE IS ON THE RIGHT →'. The main area displays a histology slide of liver tissue. The interface includes a top toolbar with a 'Snapshot' button and a file name 'Liver hepatitis 1.svs'. Below the slide, there are navigation controls: a zoom slider set to 0, a magnification menu with options 1X, 2X, 5X, 10X, 20X, 40X, and 1.00, and a scale bar showing '2 mm'. A small thumbnail of the slide is visible in the bottom right corner of the viewer. At the very bottom, there is a source URL and links for 'Web Viewer Terms', 'Privacy & Cookies', and 'Edit'.

Source: <https://my.pathomation.com/embedded/slide/NxqT9aLKY49DWE06gRtY> Web Viewer Terms | Privacy & Cookies Edit

From:
<https://docs.pathomation.com/my/> - My Pathomation

Permanent link:
https://docs.pathomation.com/my/doku.php?id=integrating_an_interactive_slide_into_powerpoint&rev=1706707308

Last update: 2024/01/31 16:21

