

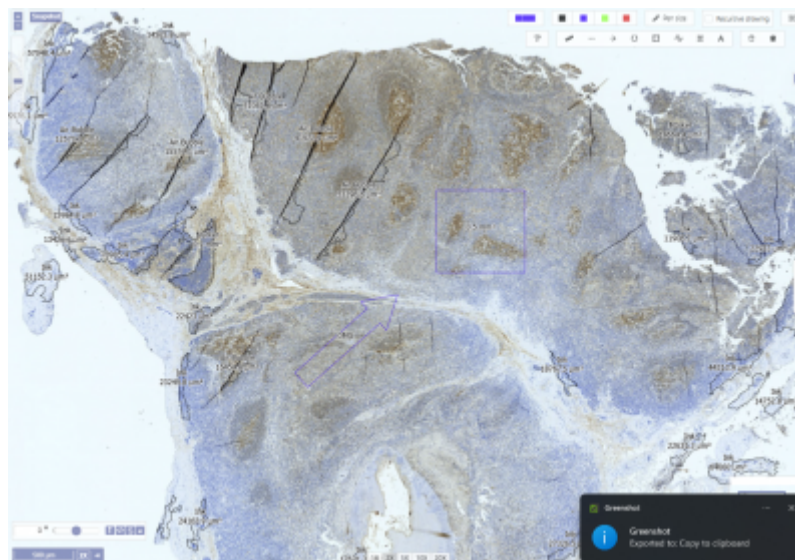
# Snapshots

For reporting and documenting what you saw it can be really useful to generate a simple .png format picture snapshot.

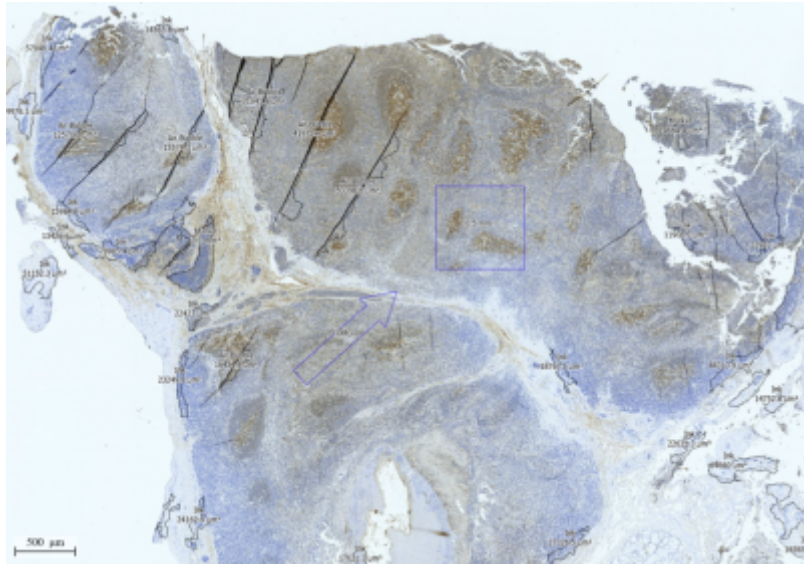
Remember the snapshot button is only visible if selected in the viewport configurations. You should select this setting, please note you can decide to have the scalebar included or not:



The example below shows the viewport before hitting the “snapshot” button:



The resulting snapshot which includes your annotations and the scalebar:



From:  
<https://docs.pathomation.com/my/> - My Pathomation

Permanent link:  
<https://docs.pathomation.com/my/doku.php?id=snapshots&rev=1752242656>

Last update: **2025/07/11 17:04**

