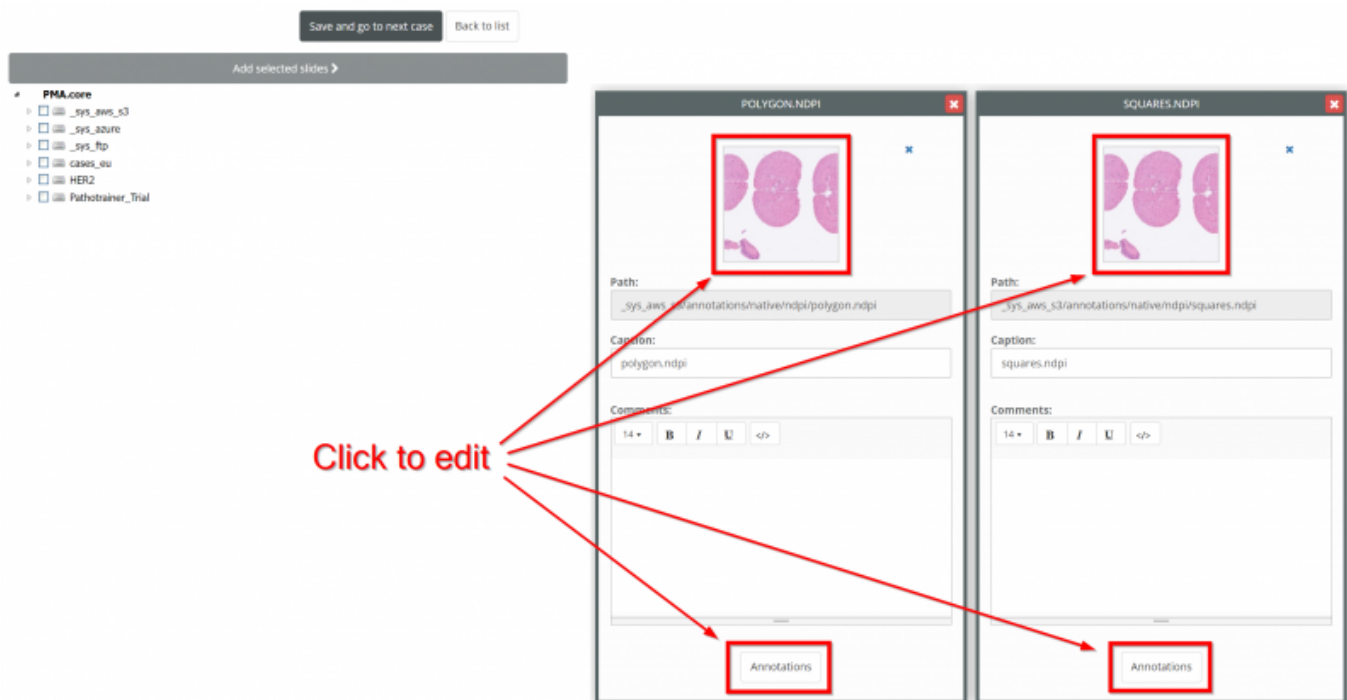


Making System Annotations as an Admin

You can make annotations that appear in all training sessions in PathoTrainer directly. When you are Creating a Case Collection or Editing an existing one, you can click on the image or the Annotations button for an image in a case to modify annotations:

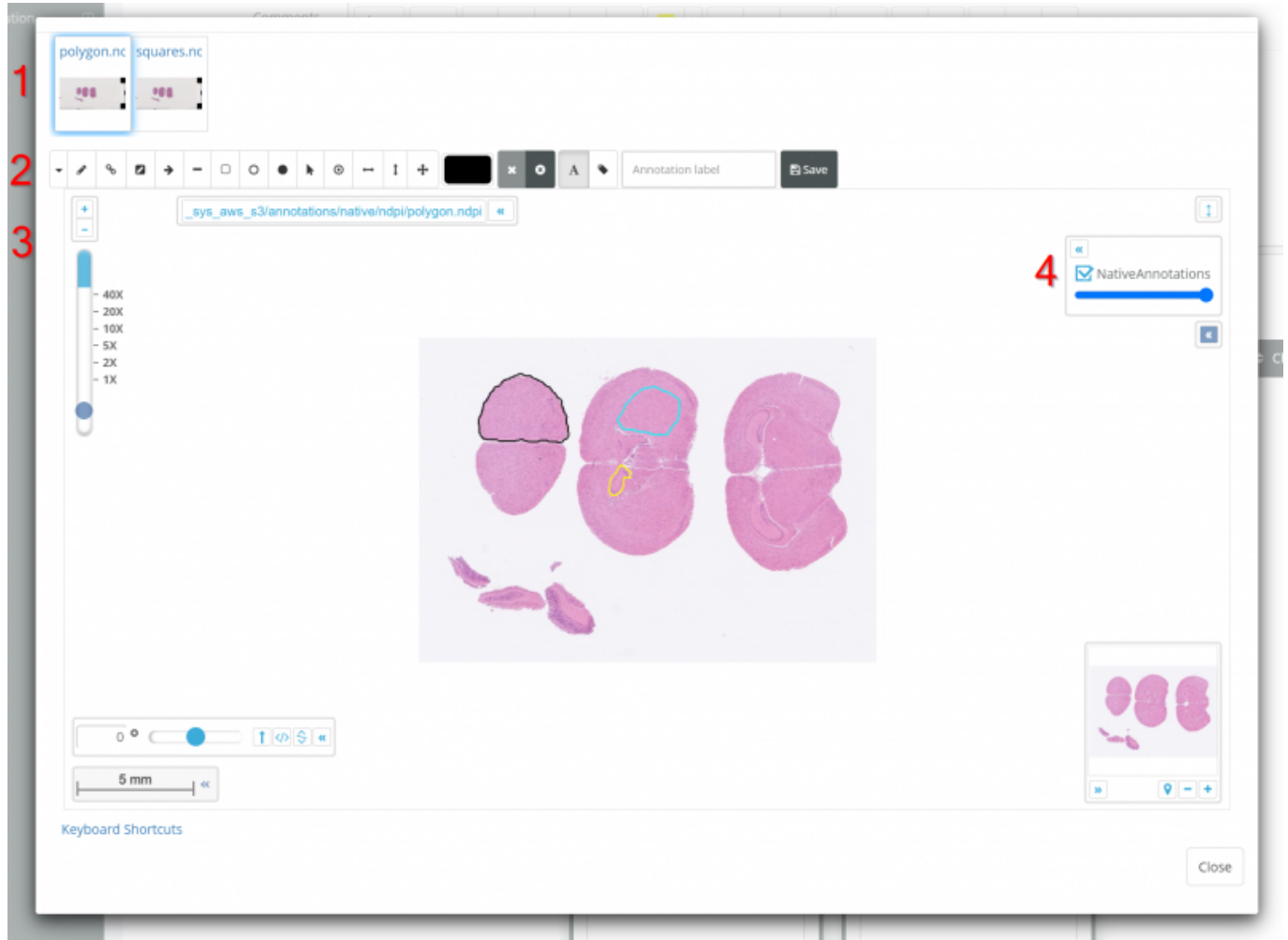


Clicking either will take you to the image configuration menu. Here you will find a few tools:

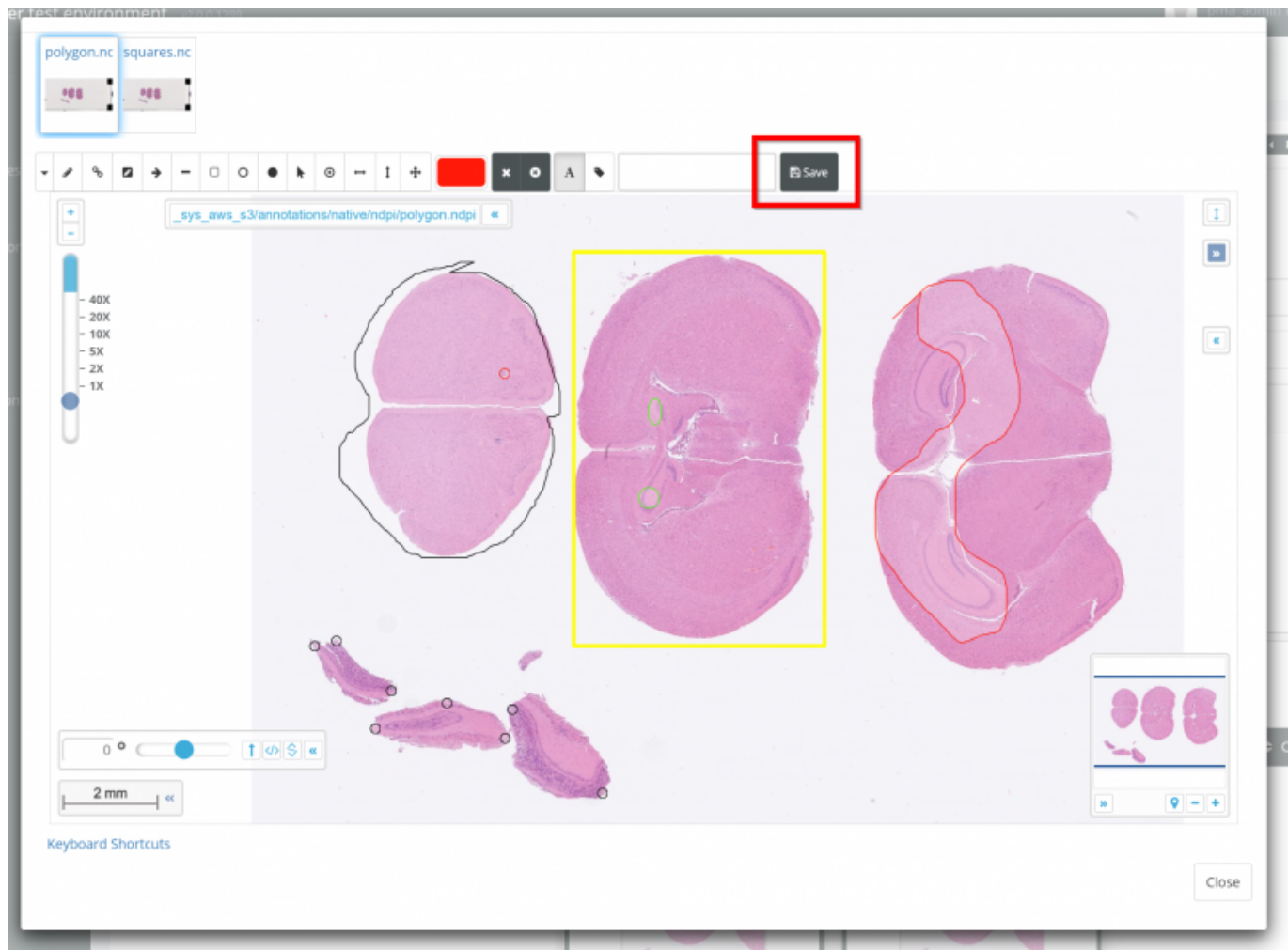
1. The image bar along the top which allows you to navigate between different images in a case
2. The annotation toolbar which you can use to make your own annotations
3. The image viewport where you can inspect and edit the image selected in (1)
4. The existing annotations menu box where you can toggle on/off the visibility of existing annotations using the checkbox and adjust their opacity using the slider bar – please note this does NOT affect how they will appear in a training session to an end user – they will be able to toggle on/off the annotations and adjust the opacity themselves.

Last update:

2025/11/14 18:32 making_annotations_as_an_admin https://docs.pathomation.com/pathotrainer/doku.php?id=making_annotations_as_an_admin



When you are done editing your custom annotations, be sure to hit save.



My Image Has Annotations But I Want To Hide Them For A Training Session

Not a problem - check out [custom interaction modes](#) to define an interaction mode in which only annotations made in your session will appear

From:
<https://docs.pathomation.com/pathotrainer/> - **Pathotrainer**

Permanent link:
https://docs.pathomation.com/pathotrainer/doku.php?id=making_annotations_as_an_admin

Last update: **2025/11/14 18:32**

