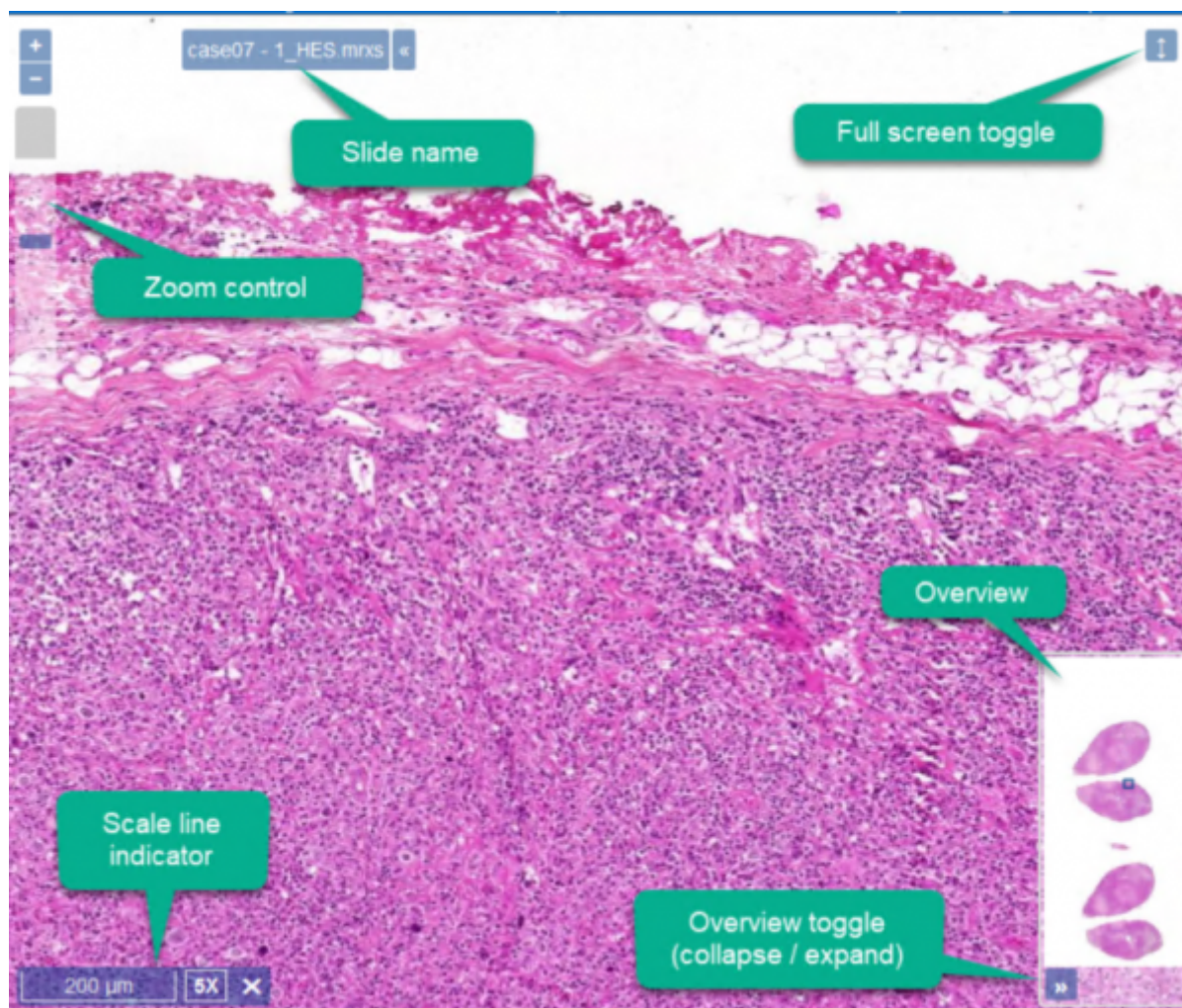


Navigating the slides

Pathotrainer comes with the a digital slide viewer that maximizes performance and ease of use. Whether you are using a desktop workstation with a computer mouse or a touch enabled device, you will find out that it is straight forward and smooth to use.



Mouse navigation

Pathotrainer works with all types of mice, however it is suggested that you use a mouse with a scroll wheel for the optimum performance. A mouse wheel with click-to-click scrolling is preferred for best user experience. The following diagram identifies how the mouse buttons are used.



Keyboard + mouse

Click & Drag: Navigate around the slide

Double click: Zoom

ALT + Mouse: Rotate

SHIFT + Mouse: Drag a box over the area you want to zoom into

Touchscreen

Tap and drag to navigate around the WSI

Zoom in and out by pinching the screen using two fingers

Laptop Touchpad

Tap and drag: Navigate around the slide

Double tap: Zoom

Click Zoom in/out by sliding two finger up or down on the touchpad.

SHIFT + Mouse: Drag a box over the area you want to zoom into

Keyboard

Press the LEFT ARROW, RIGHT ARROW, UP ARROW and DOWN ARROW keys to pan vertically and horizontally.

Overview image

Zoom in/out by clicking within the overview image as well as by dragging the rectangle inside it to move horizontally or vertically.

From:

<https://docs.pathomation.com/pathotrainer/> - **Pathotrainer**

Permanent link:

https://docs.pathomation.com/pathotrainer/doku.php?id=navigating_the_slides

Last update: **2024/02/16 12:45**

