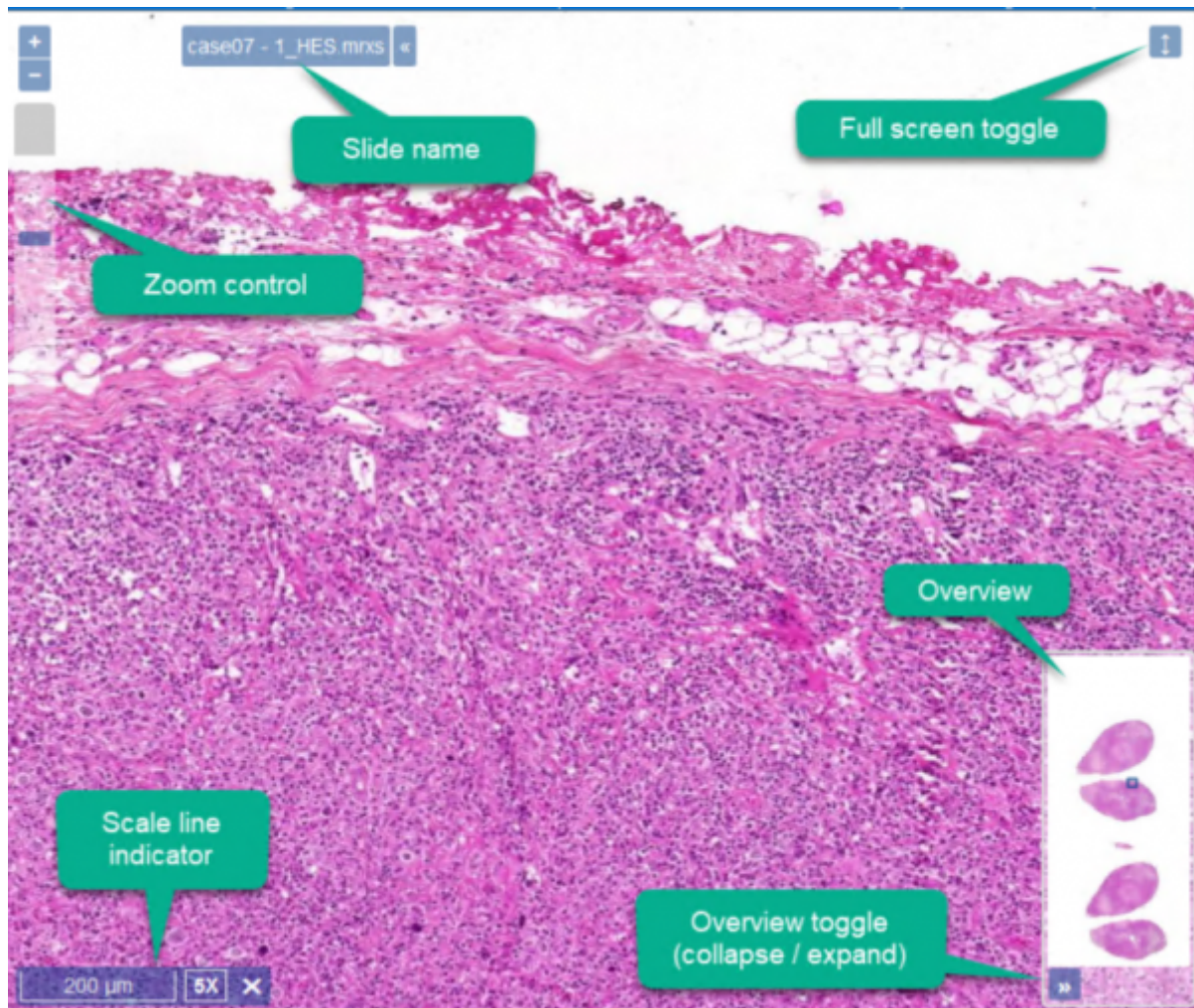


# Navigating the slides

Pathotrainer comes with the a digital slide viewer that maximizes performance and ease of use. Whether you are using a desktop workstation with a computer mouse or a touch enabled device, you will find out that it is straight forward and smooth to use.



## Mouse navigation

Pathotrainer works with all types of mice, however it is suggested that you use a mouse with a scroll wheel for the optimum performance. A mouse wheel with click-to-click scrolling is preferred for best user experience. The following diagram identifies how the mouse buttons are used.



## Keyboard + mouse

ALT + Mouse: Rotate SHIFT + Mouse: drag zoom

## Keyboard

Press the LEFT ARROW, RIGHT ARROW, UP ARROW and DOWN ARROW keys to pan vertically and horizontally.

## Touch enabled device

Zoom in and out by pinching the screen using two fingers

## Overview image

zoom in/out by clicking within the overview image as well as by dragging the rectangle inside it to move horizontally or vertically.

From: <https://docs.pathomation.com/pathotrainer/> - Pathotrainer

Permanent link: [https://docs.pathomation.com/pathotrainer/doku.php?id=navigating\\_the\\_slides&rev=1695385134](https://docs.pathomation.com/pathotrainer/doku.php?id=navigating_the_slides&rev=1695385134)

Last update: 2023/09/22 15:18

