

Participant management

On this page a trainer/supervisor can freely how some or all trainees can interact with the case collections.

Changes to the interaction mode can be made by Supervisors per case collection(s) and per user(s) at any time before or during a training session, giving you the power to reveal, hide, and lock case collections and associated forms/consensus scores whenever you need to. There are several different [interaction modes](#)

[pma.control_interaction_modes.mp4](#)

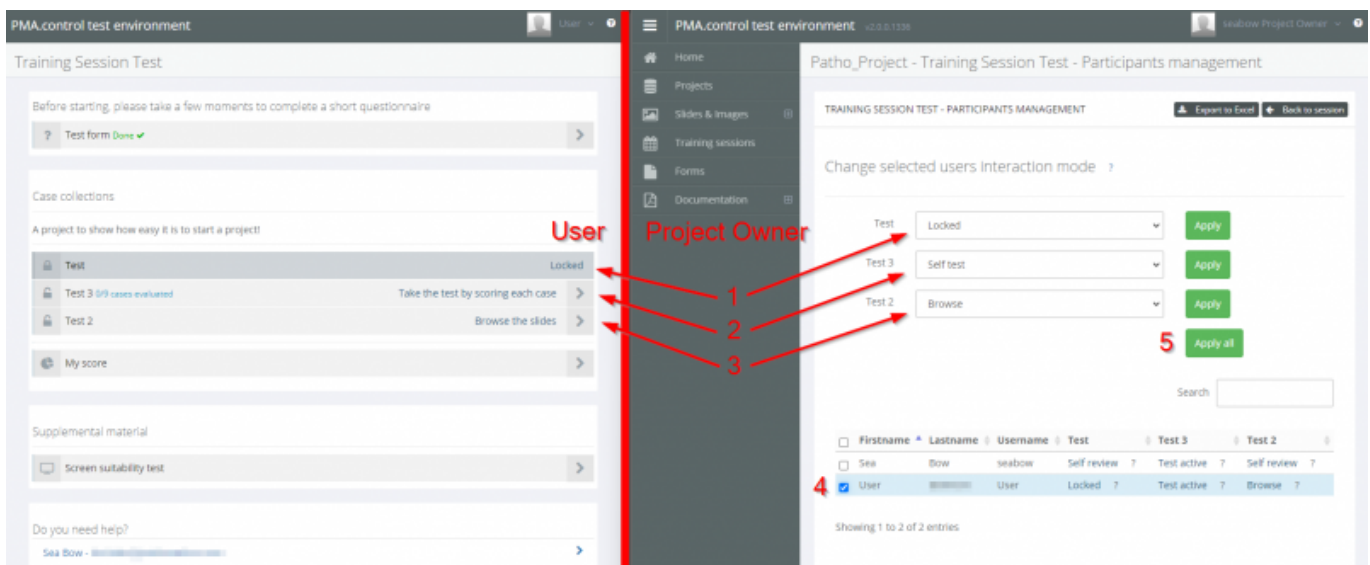
This is performed through the Participant Management menu in the session overview menu. For details on where to find this see [the session page article](#).

Primarily you will interact with participants by changing the interaction mode of the slides/case collections and their associated forms.

In the screenshot below you can see how the page looks for the User (left) and the Project Owner (right) when various interaction modes ([a full list of which can be found here](#)) have been selected

- 1. Locked - the content is not accessible
- 2. Self test - the number of cases the User has scored appears next to Test 3
- 3. Browse - the user can browse, but not score or see consensus/other user scores for the slides

After selecting the interaction mode(s) desired for each case collection, the Project Owner/Supervisor must select user(s) to apply this state to (4), and click Apply or Apply All (5)



From: <https://docs.pathomation.com/pathotrainer/> - Pathotrainer

Permanent link: https://docs.pathomation.com/pathotrainer/doku.php?id=participant_management&rev=1704287982

Last update: 2024/01/03 16:19

