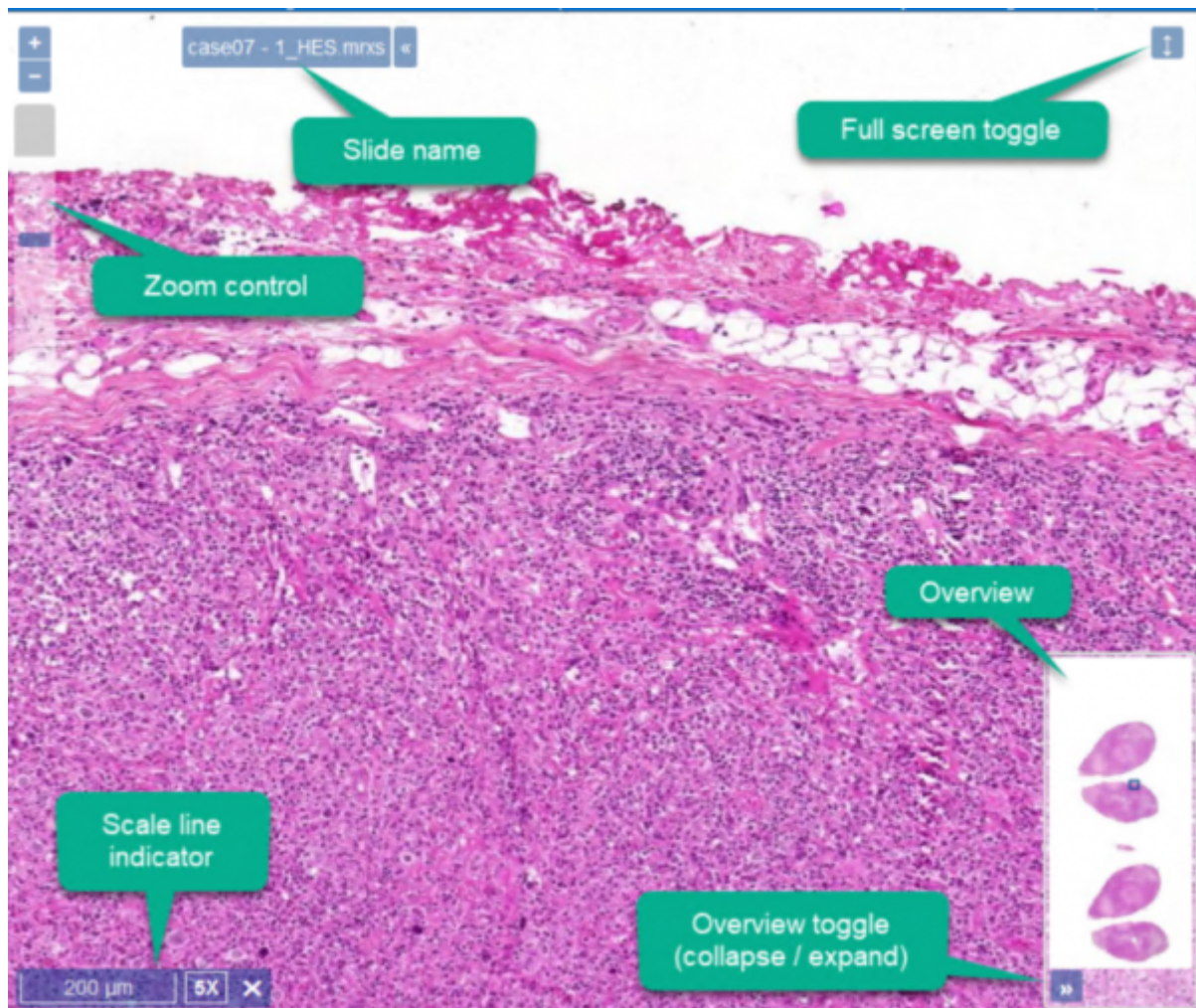


## The viewer

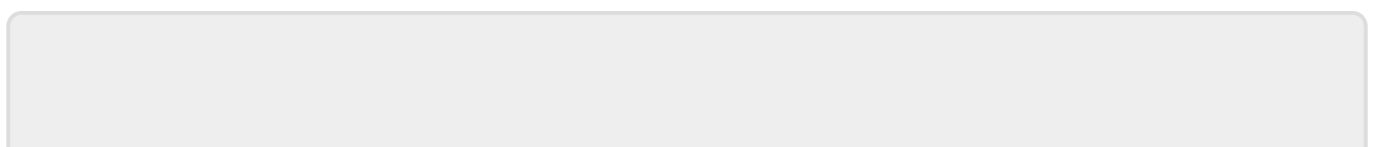
PMA.control offers an efficient digital slide viewer that maximizes performance and ease of use. Whether you are using a desktop workstation with a computer mouse or a touch enabled device, you will find out that it is straight forward and smooth to use.



- **Panning:** To move the image around, drag it with the mouse or your finger if you are using a touch enabled device. You can also navigate by clicking within the overview image as well as by dragging the rectangle inside it.
- **Zooming:** To zoom in or out scroll the mouse wheel, use the zoom control or pinch the screen using two fingers in a touch enabled device.

### Syncing viewers

As already mentioned, it is possible to open multiple slides simultaneously. On top of this, you can "lock" the slides to each other, so that when you pan or zoom in one, the rest follow. This can be enabled by ticking the "Sync" check box, which can be found above the list of slides on the right side of the page.



From:

<https://docs.pathomation.com/pathotrainer/> - **Pathotrainer**

Permanent link:

[https://docs.pathomation.com/pathotrainer/doku.php?id=the\\_viewer&rev=1591362468](https://docs.pathomation.com/pathotrainer/doku.php?id=the_viewer&rev=1591362468)

Last update: **2020/06/05 16:07**

