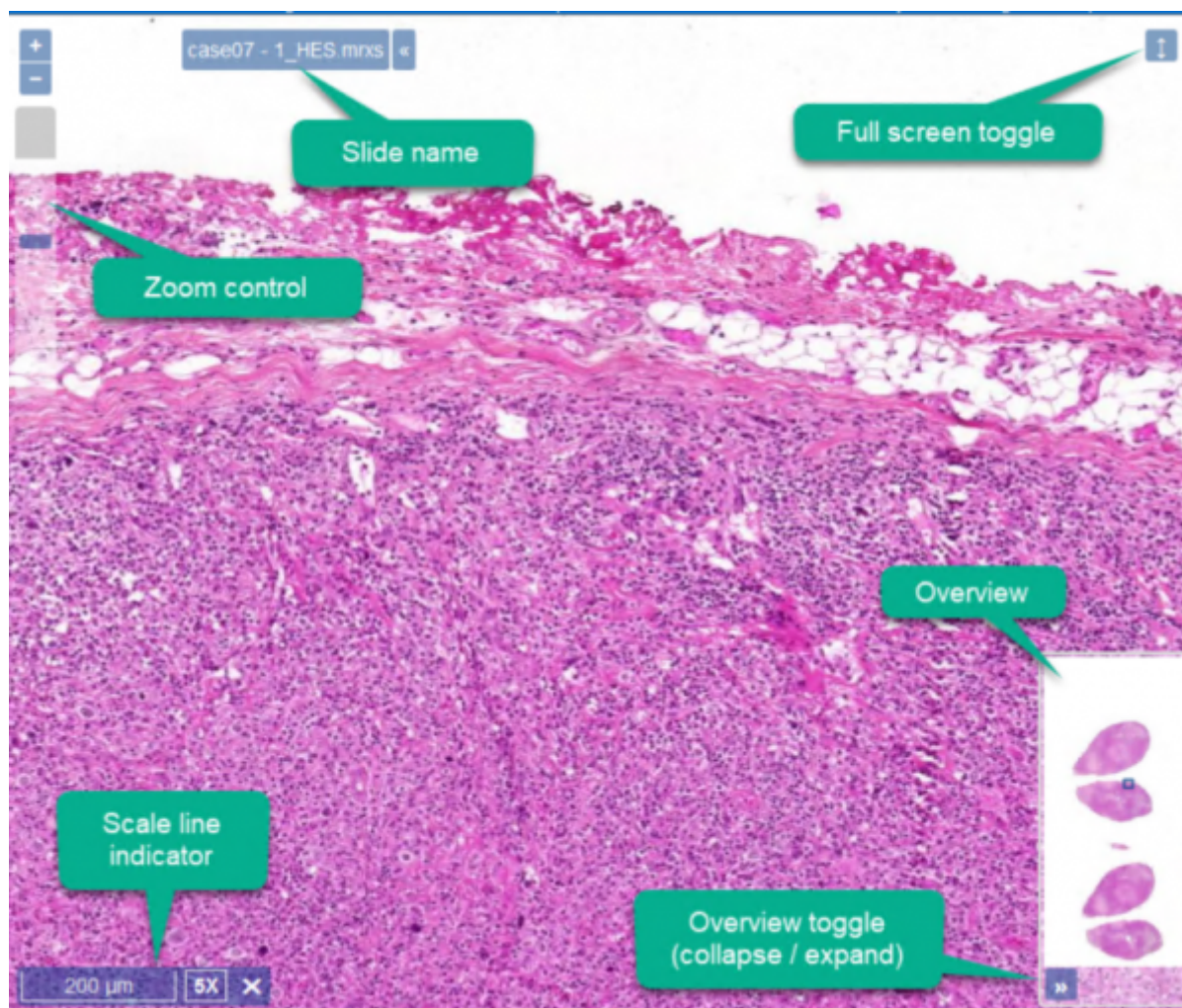


The viewer

PMA.control offers an efficient digital slide viewer that maximizes performance and ease of use. Whether you are using a desktop workstation with a computer mouse or a touch enabled device, you will find out that it is straight forward and smooth to use.



Navigation

MOUSE NAVIGATION

Pma.control works with all types of mice, however it is suggested that you use a mouse with a scroll wheel for the optimum performance. A mouse wheel with click-to-click scrolling is preferred for best user experience. The following diagram identifies how the mouse buttons are used.



KEYBOARD + MOUSE

* ALT + Mouse: Rotate * SHIFT + Mouse: drag zoom

KEYBOARD

- Press the LEFT ARROW, RIGHT ARROW, UP ARROW and DOWN ARROW keys to pan vertically and horizontally.

TOUCH ENABLED DEVICE

- zoom in and out by pinching the screen using two fingers

OVERVIEW IMAGE

by clicking within the overview image as well as by dragging the rectangle inside it.

From:
<https://docs.pathomation.com/pathotrainer/> - Pathotrainer

Permanent link:
https://docs.pathomation.com/pathotrainer/doku.php?id=the_viewer&rev=1596812136

Last update: 2020/08/07 17:55

