

Configure Panels

The panels workgroup contains a series of toggles for the many panels offered by PIMS LS

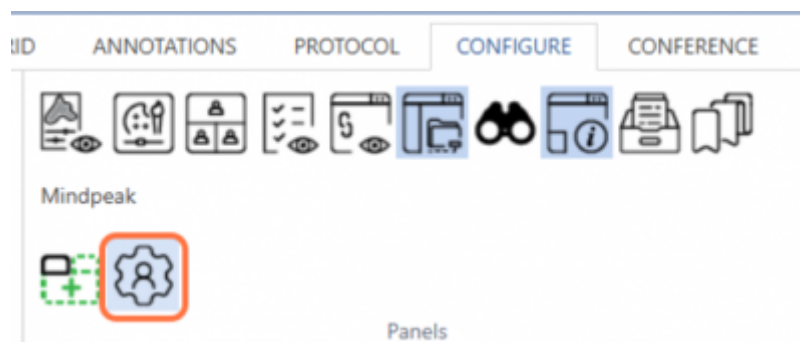
Panel icons

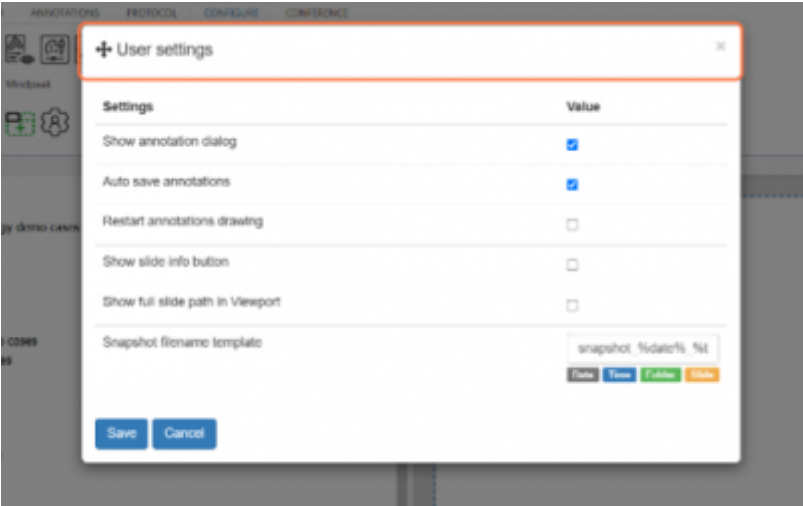
From left to right the icons control:

1. [Annotations](#)
2. [Color adjustments](#)
3. [Conferencing](#)
4. [Forms](#)
5. [Shared links](#)
6. [Slide browser](#)
7. [Search](#)
8. [Info](#)
9. [Tray](#)
10. [Bookmark](#)
11. New viewport - opens a new viewport tab with a 1x1 grid



Edit user settings





From:
<https://docs.pathomation.com/pimsls/3.0.1/> - **PIMS LS 3.0.1**

Permanent link:
<https://docs.pathomation.com/pimsls/3.0.1/doku.php?id=configpanels&rev=1733319654>

Last update: **2024/12/04 16:40**

