

Configure Panels

The panels workgroup contains a series of toggles for the many panels offered by PIMS LS

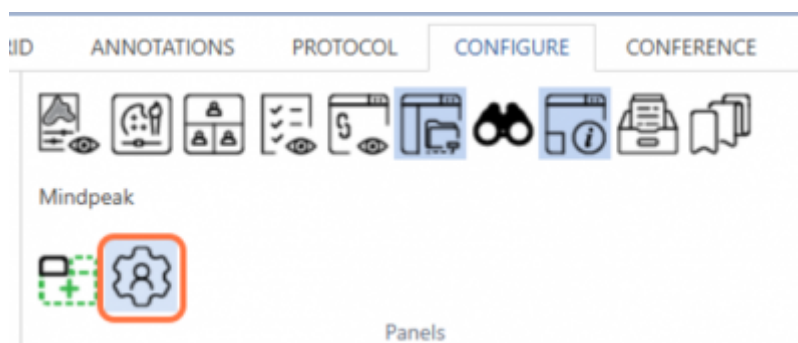
Panel icons



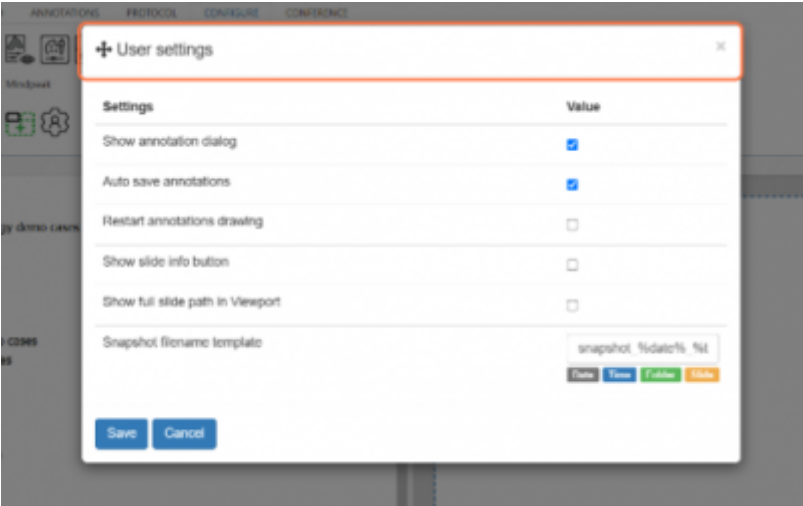
From left to right the icons turn on the following panels (you can click on the links to learn more):

1. [Annotations](#)
2. [Color adjustments](#)
3. [Conferencing](#)
4. [Forms](#)
5. [Shared links](#)
6. [Slide browser](#)
7. [Search](#)
8. [Info](#)
9. [Tray](#)
10. [Bookmark](#)
11. New viewport - opens a new viewport tab with a 1x1 grid

Edit user settings



The final icon opens a menu for toggling on and off user settings concerning which buttons you have in your display, and how annotation saving behaves



From:

<https://docs.pathomation.com/pimsls/3.0.1/> - **PIMS LS 3.0.1**

Permanent link:

<https://docs.pathomation.com/pimsls/3.0.1/doku.php?id=configpanels&rev=1733319845>

Last update:

2024/12/04 16:44

