

# Configure Panels

The panels workgroup contains a series of toggles for the many panels offered by PIMS LS

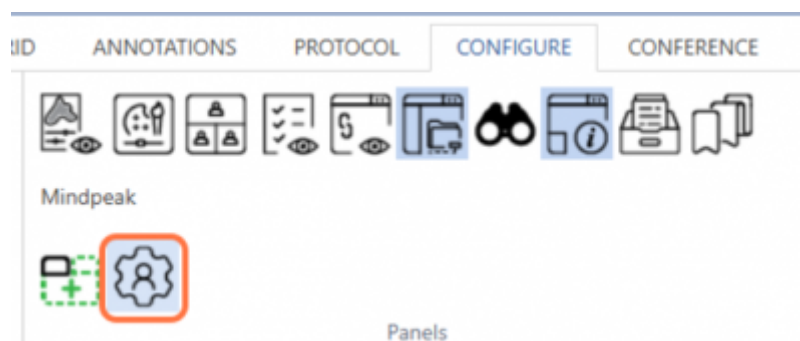
## Panel icons



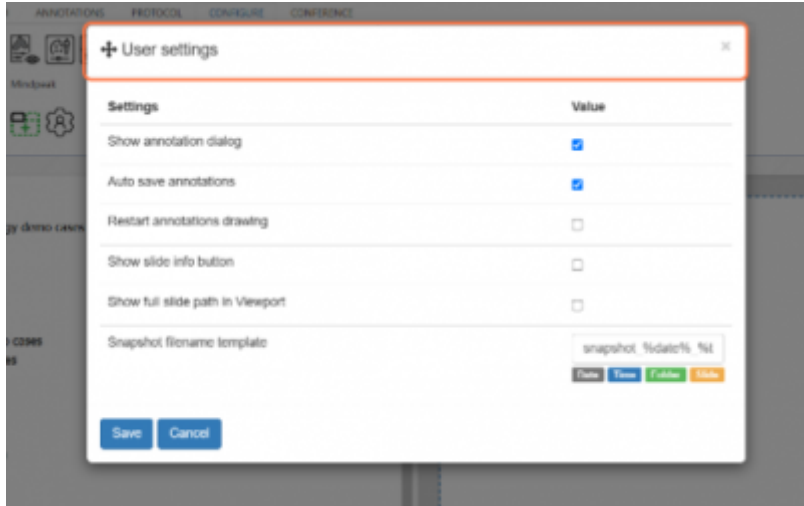
From left to right the icons turn on the following panels (you can click on the links to learn more):

1. [Annotations](#)
2. [Color adjustments](#)
3. [Conferencing](#)
4. [Forms](#)
5. [Shared links](#)
6. [Slide browser](#)
7. [Search](#)
8. [Info](#)
9. [Tray](#)
10. [Bookmark](#)
11. New viewport - opens a new viewport tab with a 1x1 grid

## Edit user settings



The final icon opens a menu for toggling on and off user settings concerning which buttons you have in your display, and how annotation saving behaves



From: <https://docs.pathomation.com/pimsls/3.1.0/> - **PIMS LS 3.1.0**

Permanent link: <https://docs.pathomation.com/pimsls/3.1.0/doku.php?id=configpanels&rev=1733319845>

Last update: **2024/12/04 16:44**

