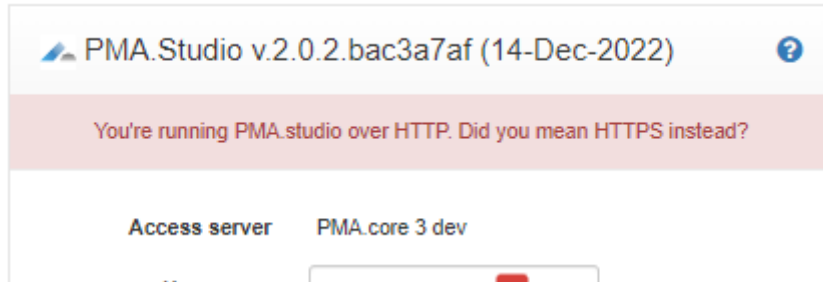


# HTTP vs HTTPS

PMA.studio and PMA.vue preferably are run under the [HTTPS-protocol](#) (provided you have an [SSL certificate](#) enabled on your webserver).

If you accidentally launch either application under the HTTP protocol instead of the HTTPS protocol, a notification shows during the login procedure.



The notification appears whether you intended to launch the application under HTTP or whether it was an accident. It's up to the end-user to decide whether the message is justified or not (in which case you can continue using the software as is, e.g. when running it on *localhost*).

From: <https://docs.pathomation.com/pimsls/3.1.1/> - **PIMS LS 3.1.1**

Permanent link: <https://docs.pathomation.com/pimsls/3.1.1/doku.php?id=https>

Last update: **2022/12/14 16:13**

