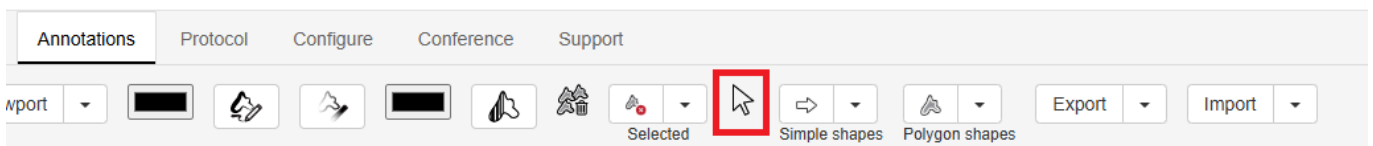


# Annotations: Selected Annotation Workgroup

The Selected Annotation drop down contains icons for merging two or more annotations, and editing currently selected annotation(s)

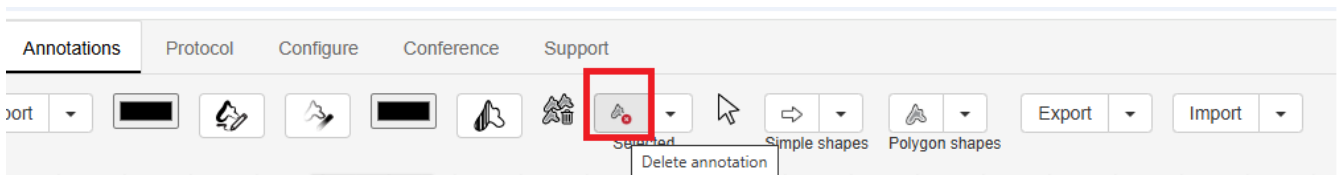
## Cursor

The cursor key will cancel any annotation function you currently have active e.g. continuous drawing and bring back the normal cursor so that you can navigate the image or select annotations by clicking on them

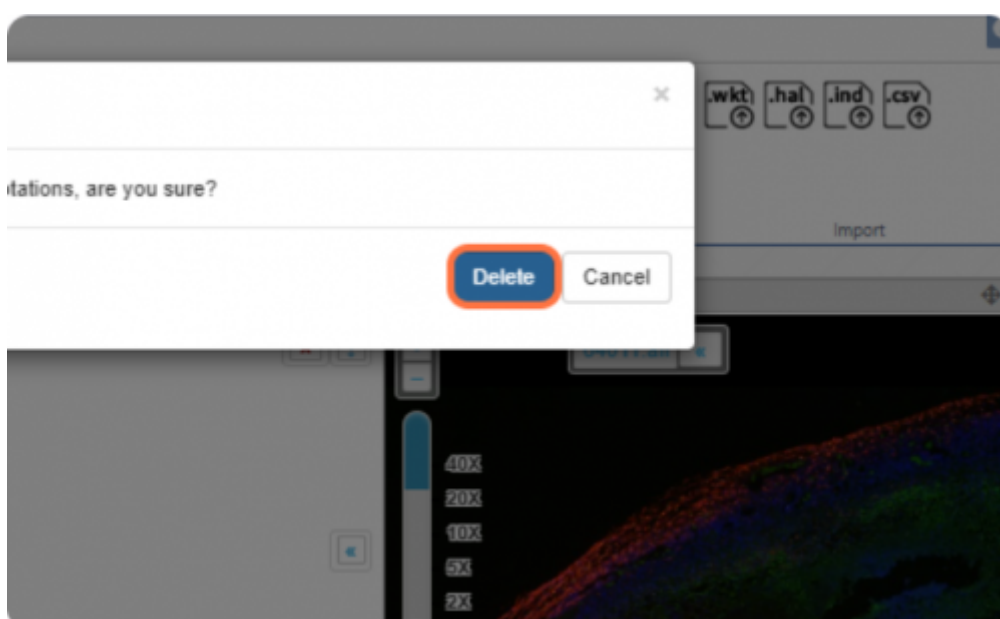


## Delete annotation

With an annotation selected - see the blue highlight below - clicking this button will delete the annotation

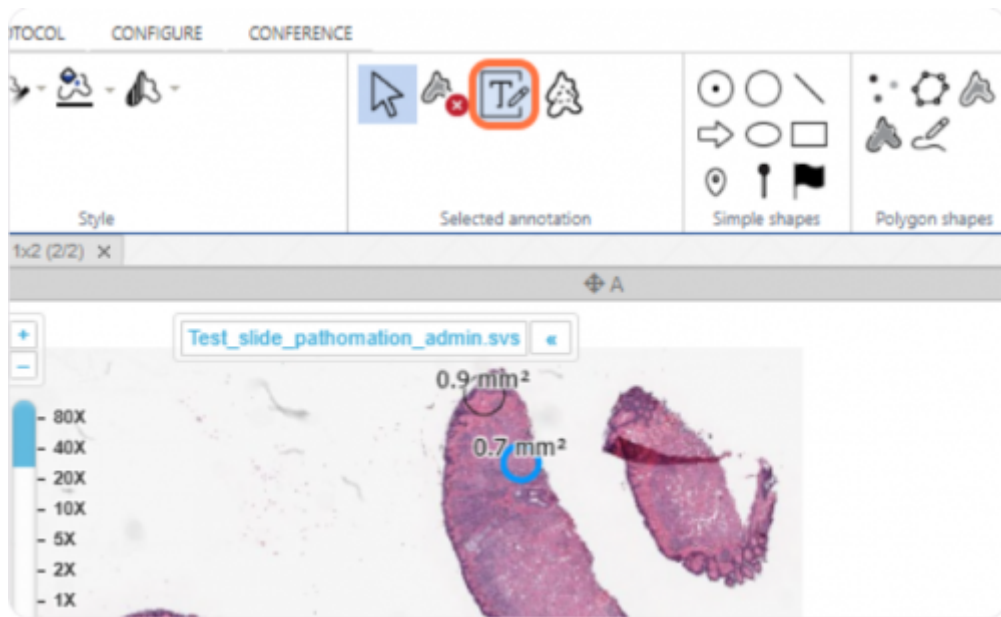


You will be prompted to confirm that you want to perform this operation

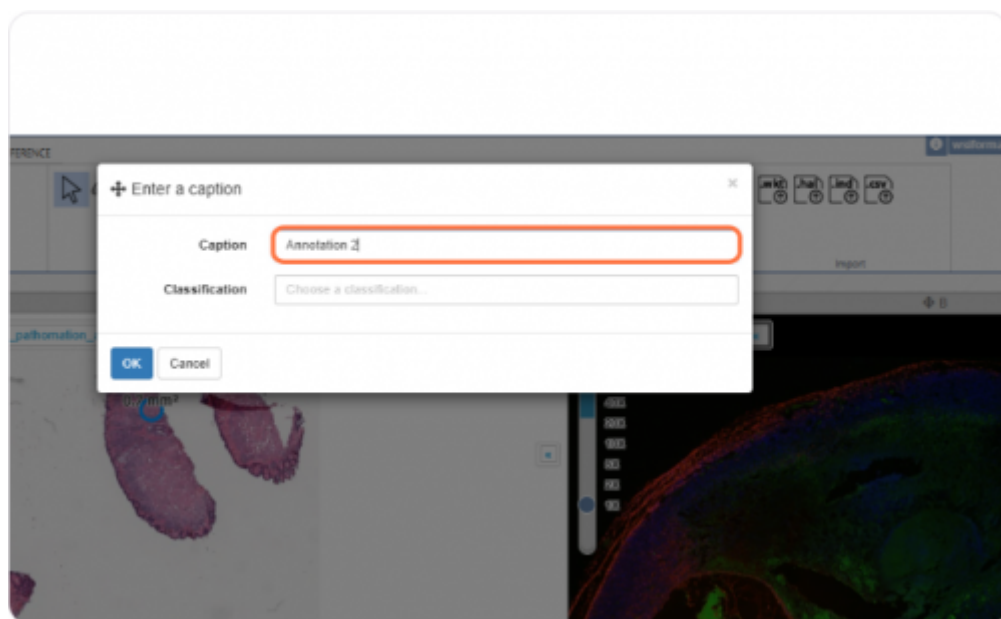


## Edit annotation text

With an annotation selected, clicking this button will open the text editing menu for the annotation



In the menu, you can change the label / classification of the annotation



## Merge annotations

Selecting two or more Lines / Freehand lines and pressing this button will complete the shape by joining them up

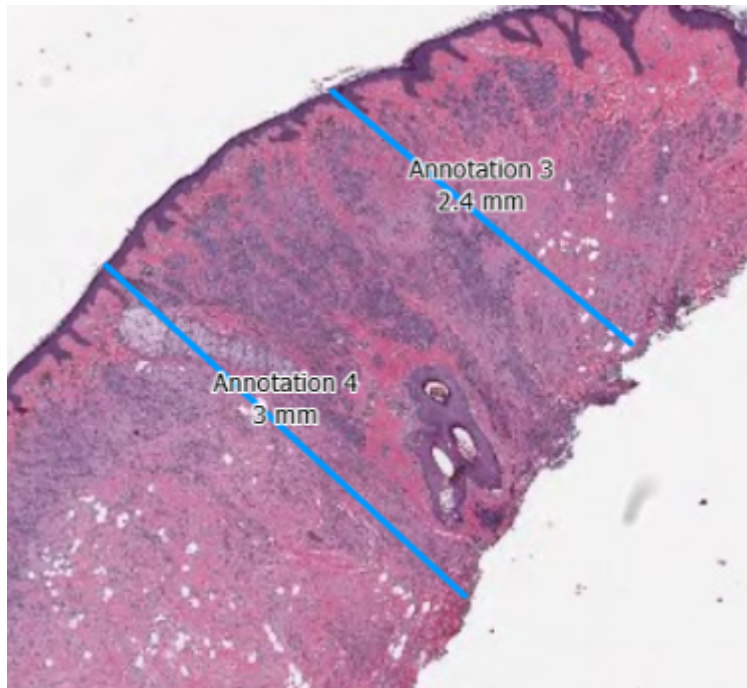
To select multiple annotations at the same time, click one annotation, then press "Click + Shift" on another annotation.

**Please note this feature only works with Freehand Lines and / or Lines**

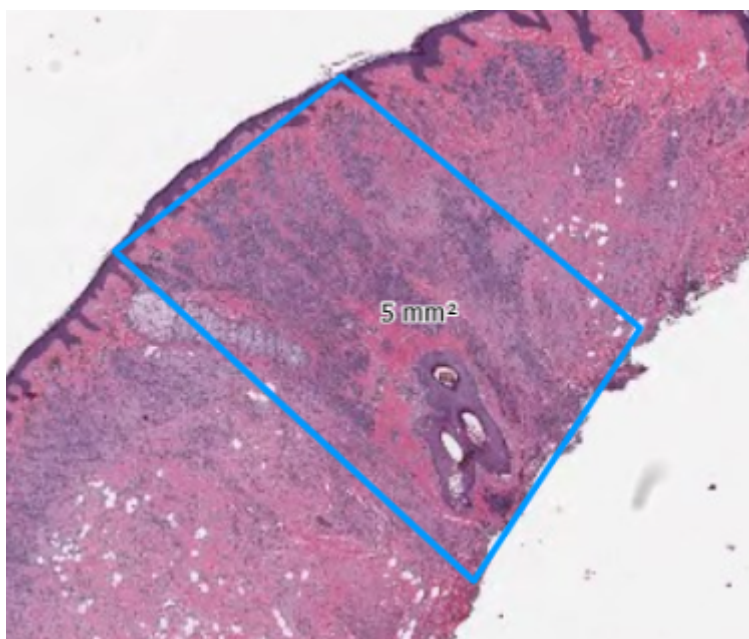


Selected annotation

In the example below you can see there are two parallel lines which are selected.



After pressing the merge annotations button, they are joined to make a rhombus



From:  
<https://docs.pathomation.com/pimsls/3.1.1/> - **PIMS LS 3.1.1**

Permanent link:  
[https://docs.pathomation.com/pimsls/3.1.1/doku.php?id=selected\\_annotations&rev=1746909490](https://docs.pathomation.com/pimsls/3.1.1/doku.php?id=selected_annotations&rev=1746909490)

Last update: **2025/05/10 23:38**

