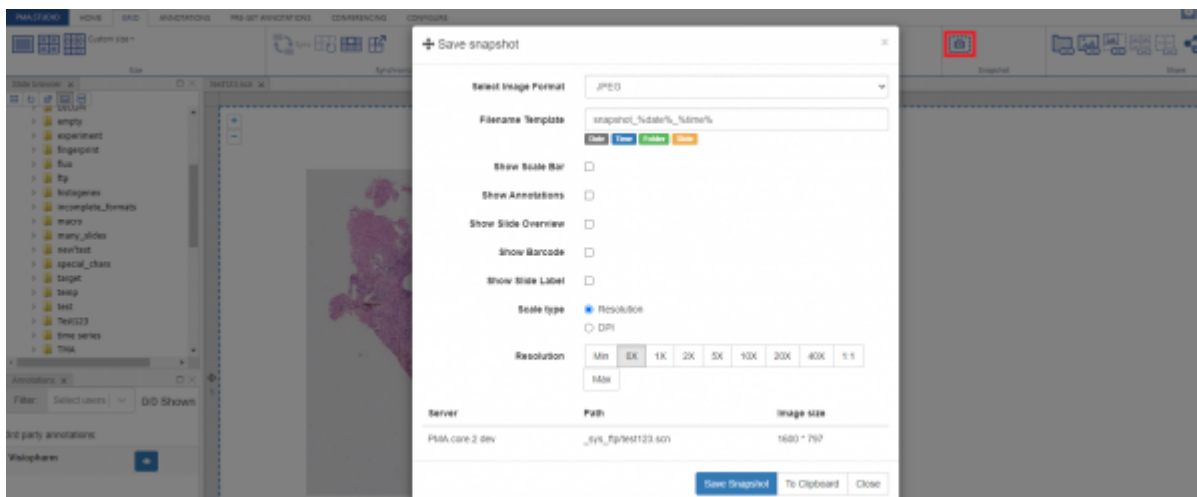


Static snapshots

PIMSLS allows you to take snapshot of the selected slide. Once you click on the snapshot button under the “GRID” tab, a popup window for “Save snapshot” appears with multiple options related to the slide before saving it. You can specify:

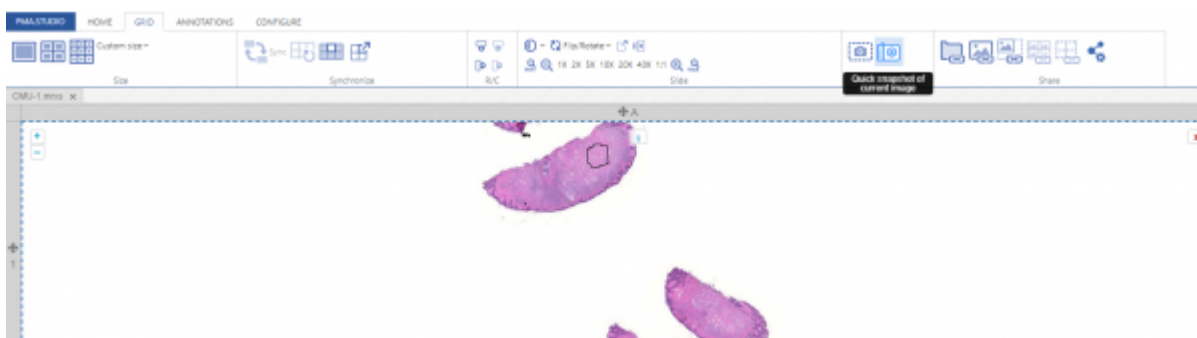
1. Image Format
2. Filename Template
3. Show Scale Bar
4. Show Annotations
5. Show Slide Overview
6. Show Barcode
7. Show Slide Label
8. Scale Size
9. Scale Type
10. Resolution



You have two options to save a snapshot, if you press “Save Snapshot” it will generate an image that can be saved on your system or if you press “To Clipboard”, it will copy that slide to clipboard and you can simply paste it over.

Quick Snapshot

Quick snapshot allows taking quick snapshot of annotation areas on the selected slide. If there are more than one annotations it will create a zip folder of images.



Snapshot Preview

Application now provides preview of the snapshot before downloading it. You can toggle different snapshot option by selecting/deselecting checkbox that include showing annotations, slide overview, barcode, label and scale bar. User can also zoom in/out to view the snapshot preview.

+ Save snapshot

Select Image Format:

Filename Template:

Scale type: DPI Resolution

Dpi:

Show Scale Bar:

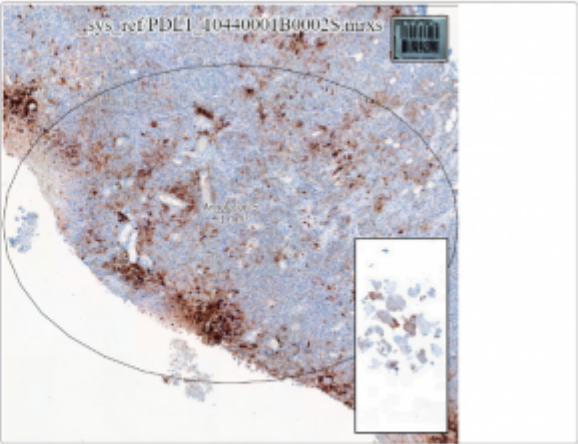
Show Annotations:

Show Slide Overview:

Show Barcode:

Show Slide Label:

Server	Path	Image size
PIMA core-3 dev	_sys_refPDL1_10440001B0002S.mrxs	767 * 737 px



Save Snapshot To Clipboard Close

From: <https://docs.pathomation.com/pimsls/3.1.1/> - PIMS LS 3.1.1

Permanent link: https://docs.pathomation.com/pimsls/3.1.1/doku.php?id=slides_snapshot&rev=1728649282

Last update: 2024/10/11 15:21

