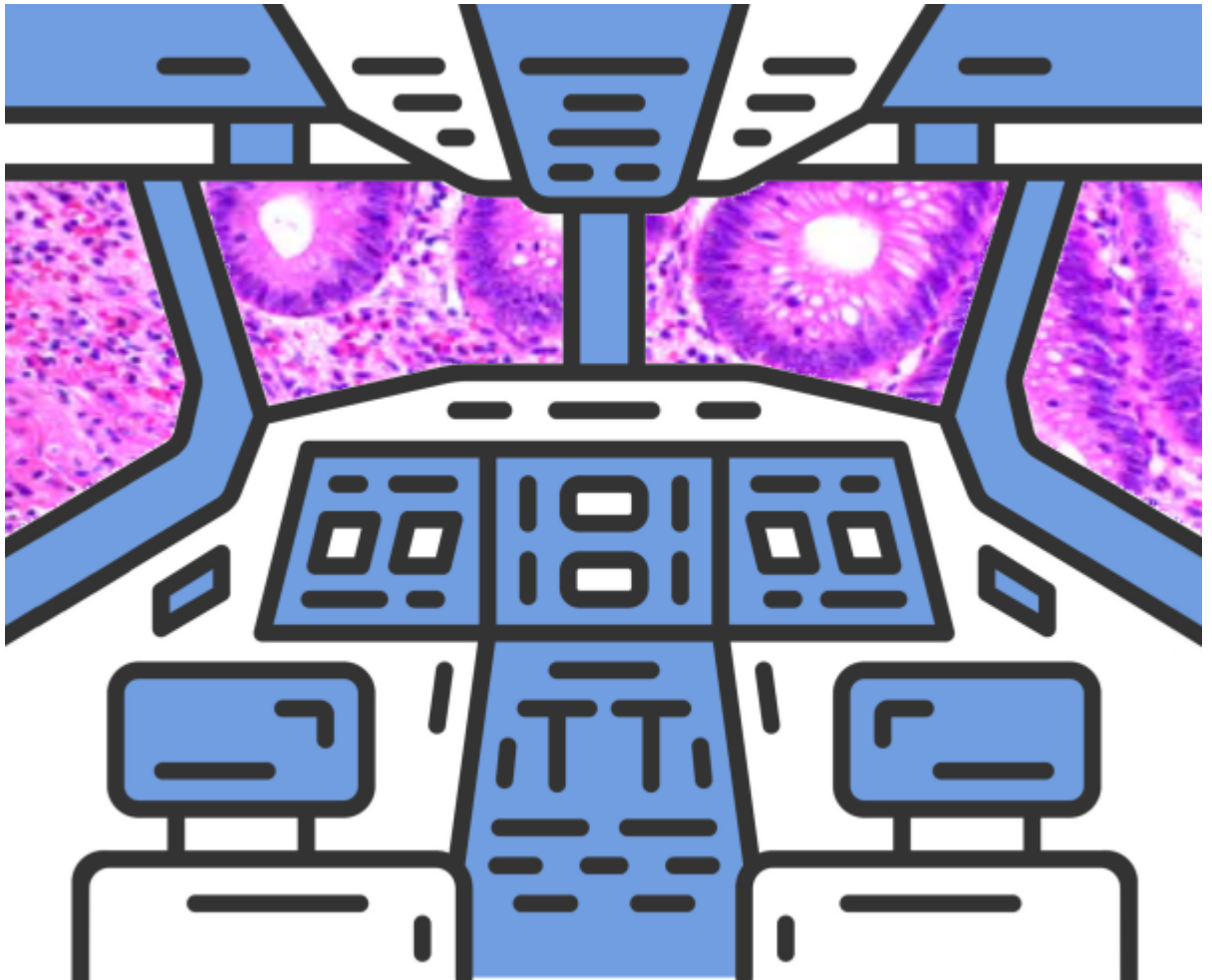


Who should read this

Welcome to PMA.studio and PMA.vue, an universal web-based viewer for whole slide image (WSI) data, developed by Pathomation. This manual is intended for PMA.studio and PMA.vue end-users, from beginner to experienced, those who are just discovering the software and those who need to further learn about its more advanced features.

Cockpit concept

PMA.studio (and to a lesser extent PMA.vue) acts as a cockpit for digital pathology content.



Both software application web-based graphical interface for digital pathology and virtual microscopy, intended for everyone, especially

- those who are new to whole slide images.
- people that want an easy, graphical way to administer digital pathology content.
- Expert users like image analyst admins who mainly use other tools but want an overview on individual systems.

Enjoy your take-off!

From:
<https://docs.pathomation.com/pimsls/3.1.1/> - **PIMS LS 3.1.1**

Permanent link:
https://docs.pathomation.com/pimsls/3.1.1/doku.php?id=who_should_read_this&rev=1671028856

Last update: **2022/12/14 17:40**

