

## Who should read this

Welcome to the user manual for PIMSLS, an universal web-based viewer for whole slide image (WSI) data, developed by Pathomation. This manual is intended for PIMSLS end-users, from beginner to experienced, those who are just discovering the software and those who need to further learn about its more advanced features.

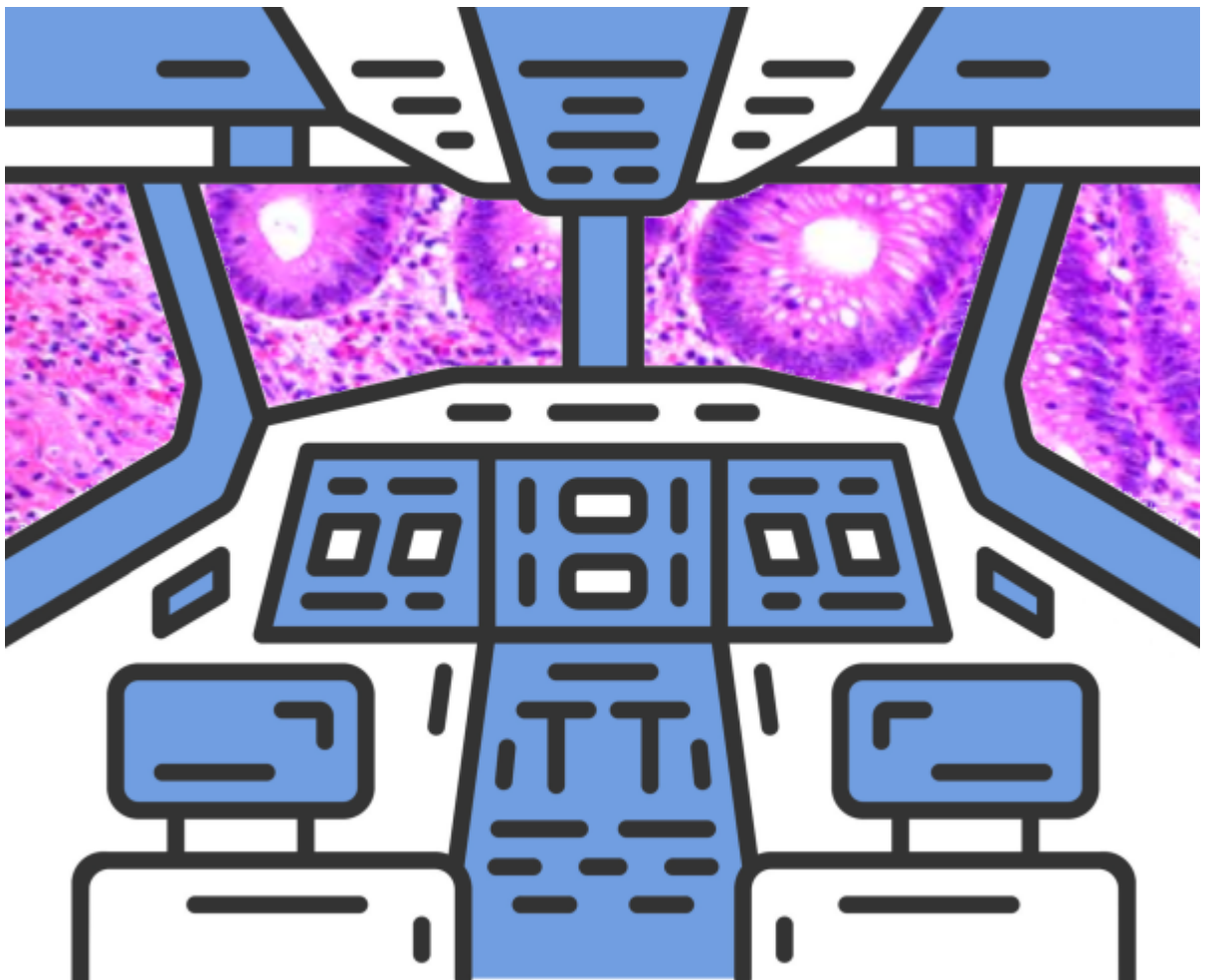
### Cockpit concept

PIMSLS acts as a cockpit for digital pathology content.

PIMSLS is a web-based graphical interface for digital pathology and virtual microscopy, intended for everyone, especially:

- those who are new to whole slide images.
- people that want an easy, graphical way to administer digital pathology content.
- Expert users like image analyst admins who mainly use other tools but want an overview on individual systems.

Enjoy your take-off!



From:  
<https://docs.pathomation.com/pimsls/3.1.1/> - **PIMS LS 3.1.1**

Permanent link:  
[https://docs.pathomation.com/pimsls/3.1.1/doku.php?id=who\\_should\\_read\\_this&rev=1728648382](https://docs.pathomation.com/pimsls/3.1.1/doku.php?id=who_should_read_this&rev=1728648382)

Last update: **2024/10/11 15:06**

