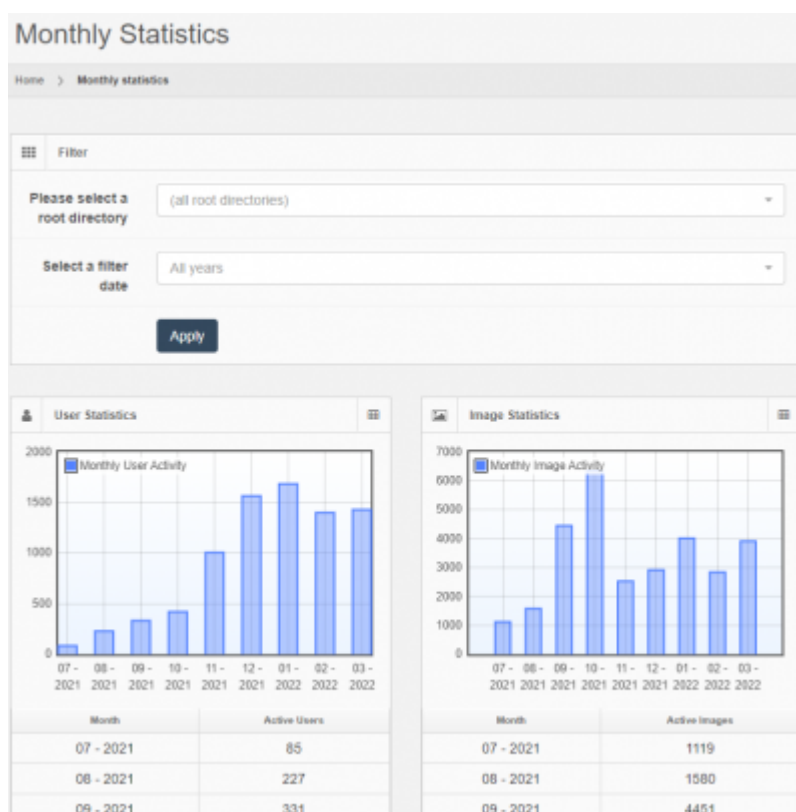


# Monthly statistics



On the monthly statistics page you can generate monthly reports for the server's activity over a specified range of years. These reports include - the number of users active each month - the number of slides viewed each month

Also you can generate reports by filtering the results with following criteria: - A specific Virtual Root directory to show only slides under that specific root directory, and only users that accessed those slides - Year range: A year to show results only for that specific year

From:

<https://docs.pathomation.com/pma.core/2.0/> - **PMA.core 2.x**

Permanent link:

[https://docs.pathomation.com/pma.core/2.0/doku.php?id=report\\_monthly](https://docs.pathomation.com/pma.core/2.0/doku.php?id=report_monthly)

Last update: **2022/03/30 16:01**

