

## Ribbon > Home tab > Viewport group > Toggle scalebar

### Button identification

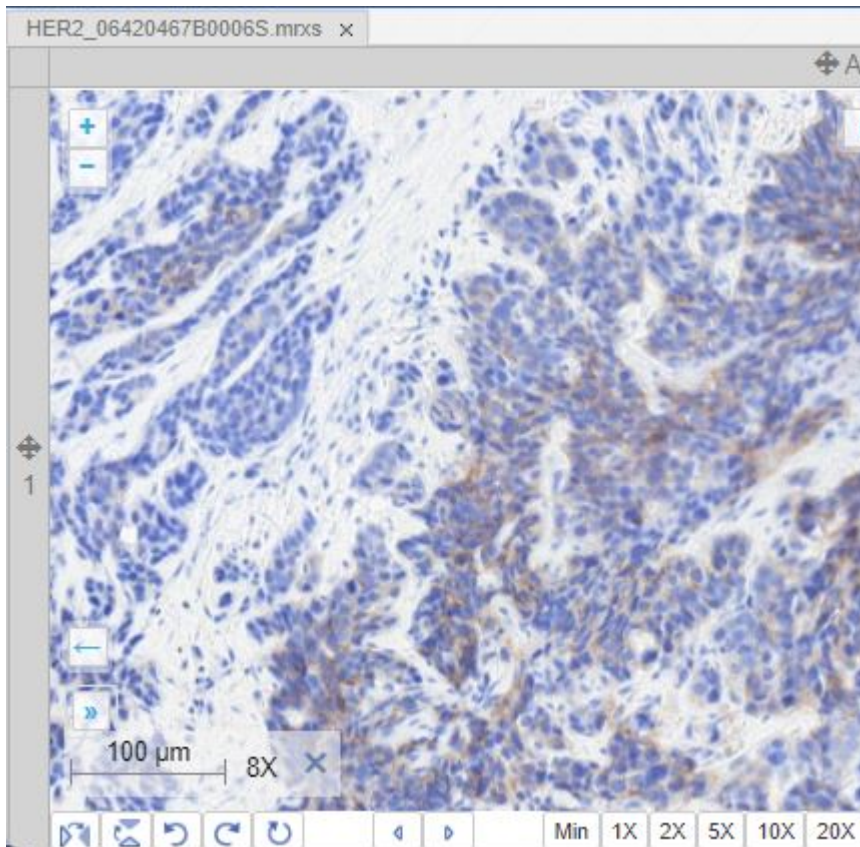


### Associated command

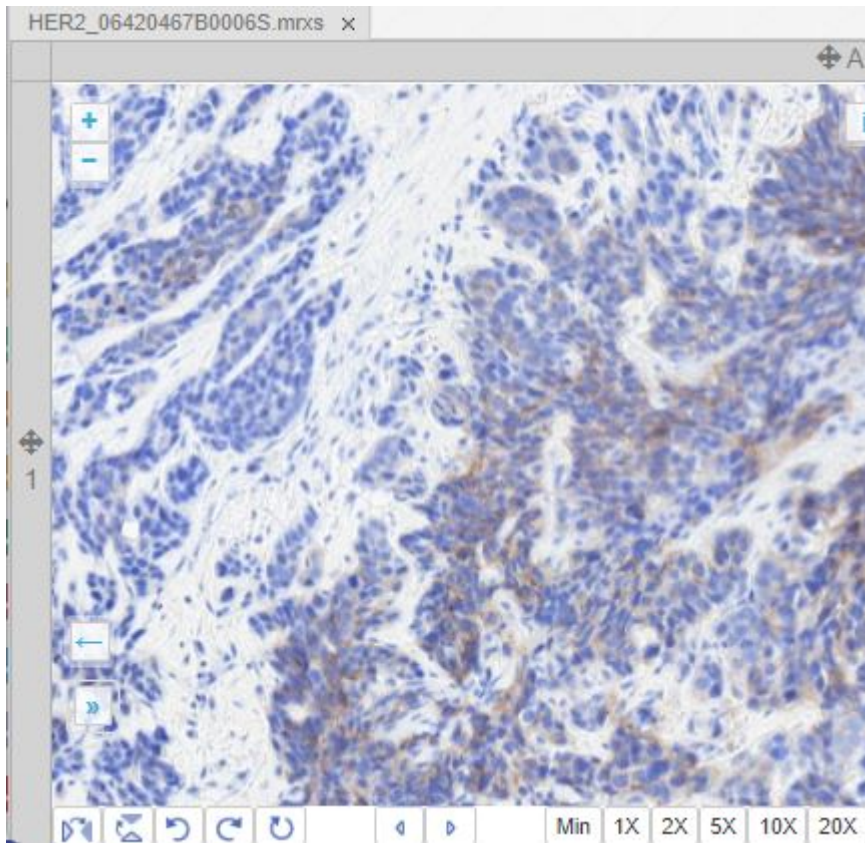
viewport-toggle-scalebar

### Function description

When enabled, the viewport looks like this:



When disabled, the widget is hidden from view:



## Related functionality

[Ribbon > Home tab](#)

From: <https://docs.pathomation.com/pma.studio/2.1.0/> - **PMA.studio 2.1.0**

Permanent link: [https://docs.pathomation.com/pma.studio/2.1.0/doku.php?id=ribbon\\_home\\_viewport\\_toggle\\_scalebar&rev=1676046637](https://docs.pathomation.com/pma.studio/2.1.0/doku.php?id=ribbon_home_viewport_toggle_scalebar&rev=1676046637)

Last update: **2023/02/10 19:30**

