

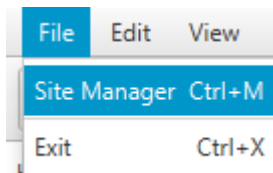
The site manager aims to make it easy for end users to store connection data related to the different Pathomation server instances (PMA.core, Pathomation cloud...).

It can be initiated via :

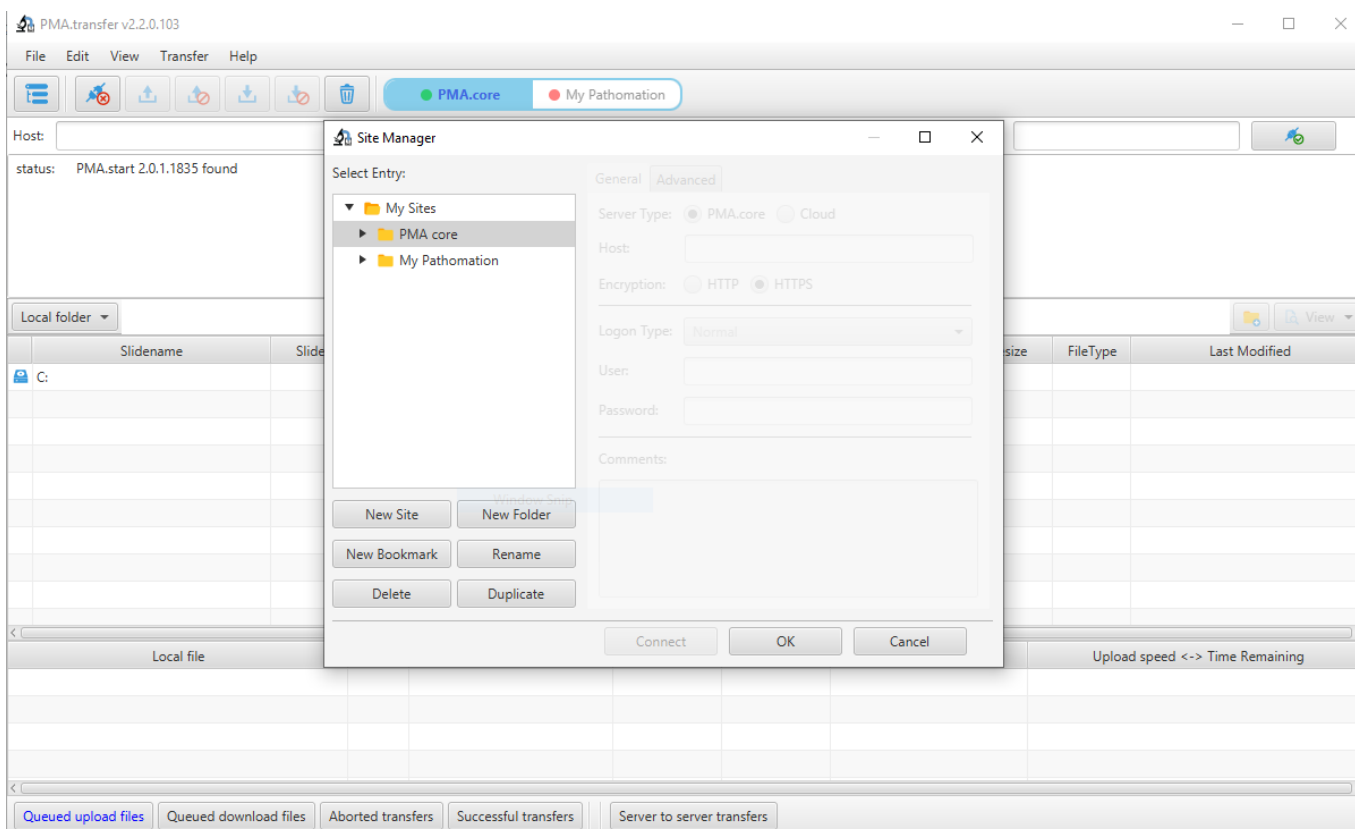
- click on button “Site Manager” (first to the left on the icons toolbar)



- click on Menu item “Site Manager” on Menu “File”.



- Keyboard shortcut “Ctrl + M”.



It enables end users to organize connection data into folders, sites, bookmarks in addition to a couple of others functionalities (rename, duplicate...) The data generated by the site manager is stored inside file “PMA.Transfer_data.json” on user’s default Windows directory :

Last update:
2020/05/16 05:14

about_site_manager https://docs.pathomation.com/pma.transfer/doku.php?id=about_site_manager&rev=1589595288

Name	Date modified	Type	Size
★ Favorites	12/14/2018 11:42 ...	File folder	
🔗 Links	12/14/2018 11:42 ...	File folder	
🎵 Music	12/14/2018 11:42 ...	File folder	
☁ OneDrive	1/2/2019 1:40 AM	File folder	
🖼 Pictures	12/14/2018 11:42 ...	File folder	
🎮 Saved Games	12/14/2018 11:42 ...	File folder	
🔍 Searches	12/14/2018 11:42 ...	File folder	
📄 TwixTel	3/22/2018 12:45 PM	File folder	
📺 Videos	12/14/2018 11:42 ...	File folder	
📄 PMA.Transfer_data.json	1/7/2019 1:30 AM	JSON File	1 KB

The content of this file should not be modified!

From:
<https://docs.pathomation.com/pma.transfer/> - **PMA.transfer**

Permanent link:
https://docs.pathomation.com/pma.transfer/doku.php?id=about_site_manager&rev=1589595288

Last update: **2020/05/16 05:14**

