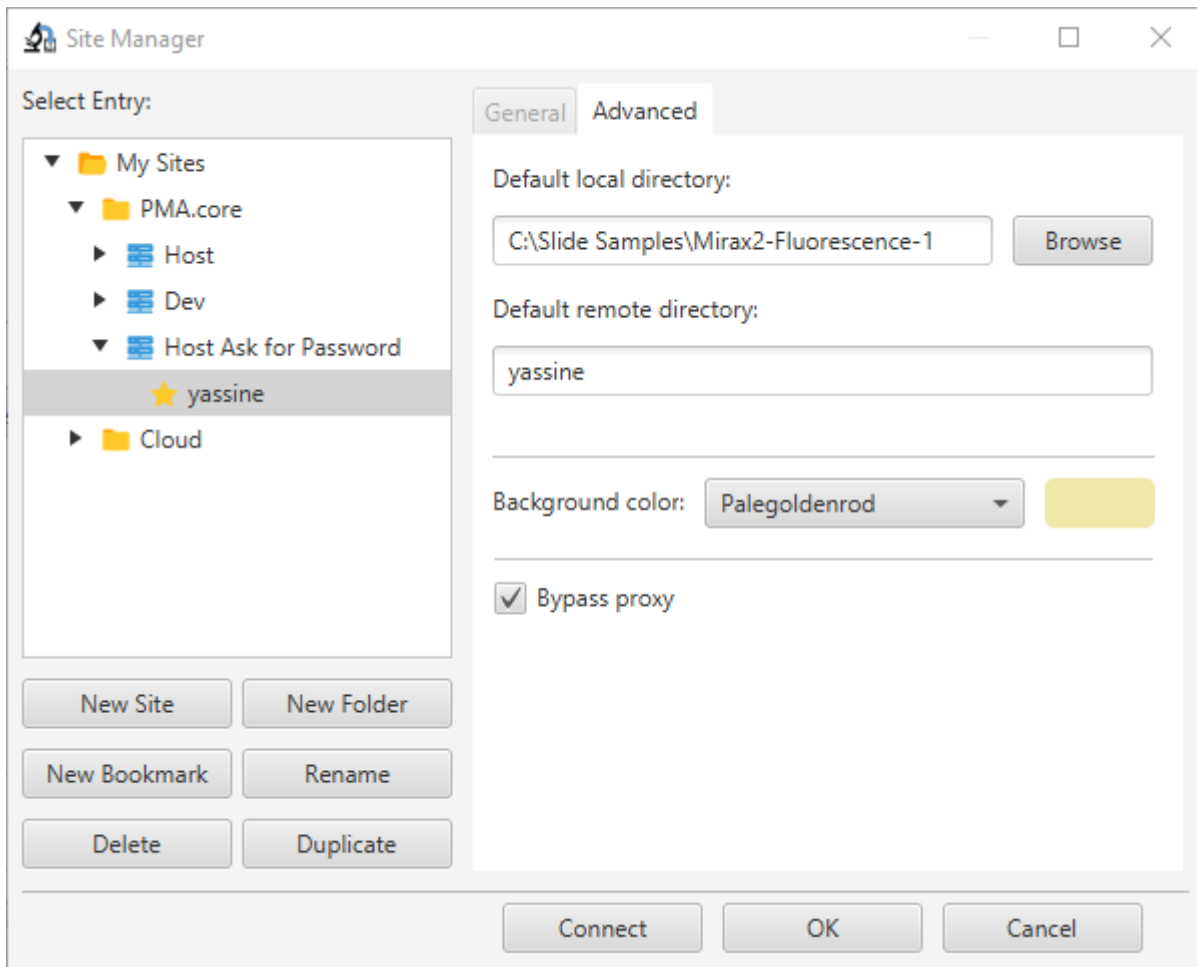


Since it's possible to have multiple slide folders on a local HDD and access multiple slide folders on server side (either PMA.core or Pathomation cloud), bookmarks offer the possibility to save favorite combinations of local/remote directories to navigate directly to once a connection is successfully initiated. Each Bookmark belongs to a parent site and relies on it for connection data.



- Click on button "New Site" creates a new site within the parent folder of the site the selected bookmark belongs to.
- Click on button "New Folder" creates a new folder within the parent folder of the site the selected bookmark belongs to.
- Click on button "New Bookmark" creates a new bookmark next to the selected bookmark.
- Click on button "Rename" makes the Tree item editable so the bookmark's name can be modified (to confirm the modifications press "Enter" key, to cancel them press "ESC").
- Click on button "Delete" deletes selected bookmark.
- Click on button "Duplicate" copies the selected bookmark in a new node next to it.

From:  
<https://docs.pathomation.com/pma.transfer/> - PMA.transfer

Permanent link:  
<https://docs.pathomation.com/pma.transfer/doku.php?id=bookmarks&rev=1589526097>

Last update: 2020/05/16 05:14

