

Local site

	Slidename	Slidesize	FileType	Last Modified
↑	..			
🖼️	3D_FL_test01.mrxs	43,620,186	MRXS File	Thu Dec 26 06:34:59 GMT+01:00 2019
🖼️	clear.png	274	PNG File	Sun Dec 08 19:02:43 GMT+01:00 2019
🖼️	JP2K-33003-1.svs			05:40:22 GMT+01:00 2018
🖼️	JP2K-YCBCR-1.svs			06:36:50 GMT+01:00 2019
🖼️	sampleX.jpg			14:37:58 GMT+01:00 2019
🖼️	Test2.jpg			19:02:37 GMT+01:00 2019

Open slide in PMA.start

Upload slide to remote site

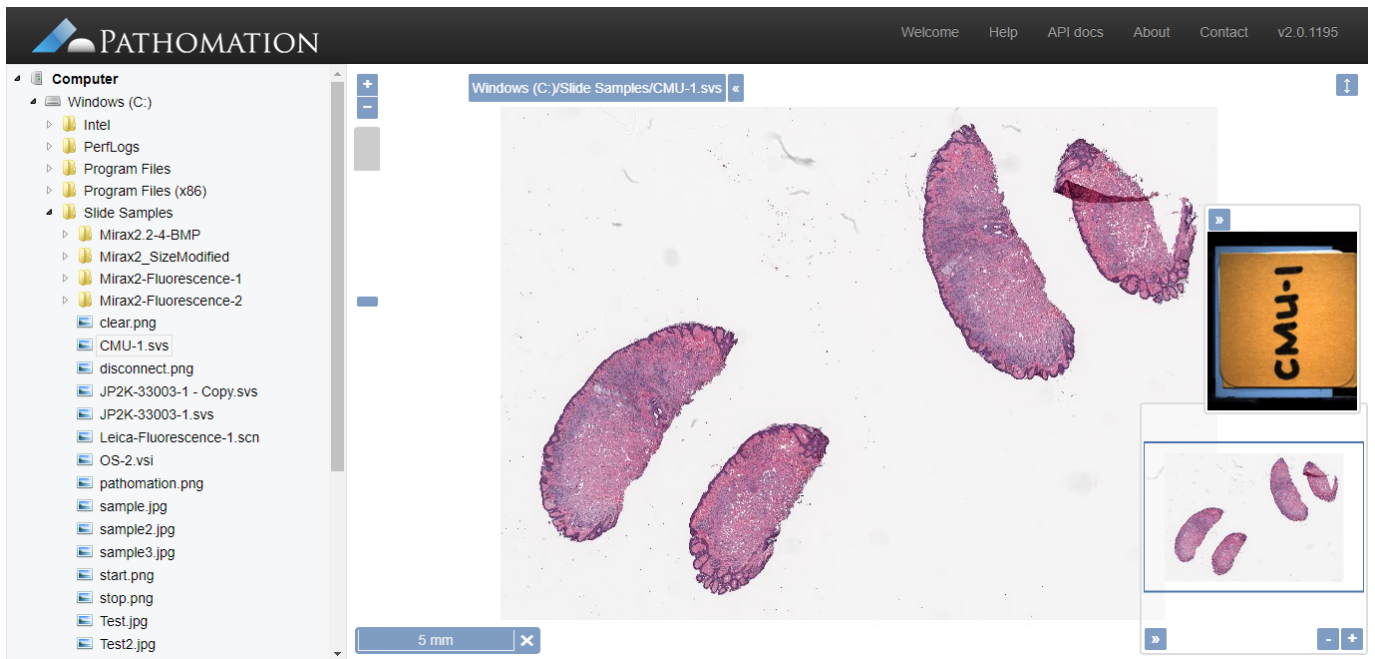
Inspect slide Ctrl+Alt+I

Copy full path Ctrl+Alt+C

Initiated via mouse right click within the table view borders, it's composed of four menu items : "Open slide in PMA.start", "Upload slide to remote site", "Inspect slide" and "Copy full path".

Open slide in PMA.start :

Opens the slide in PMA.start

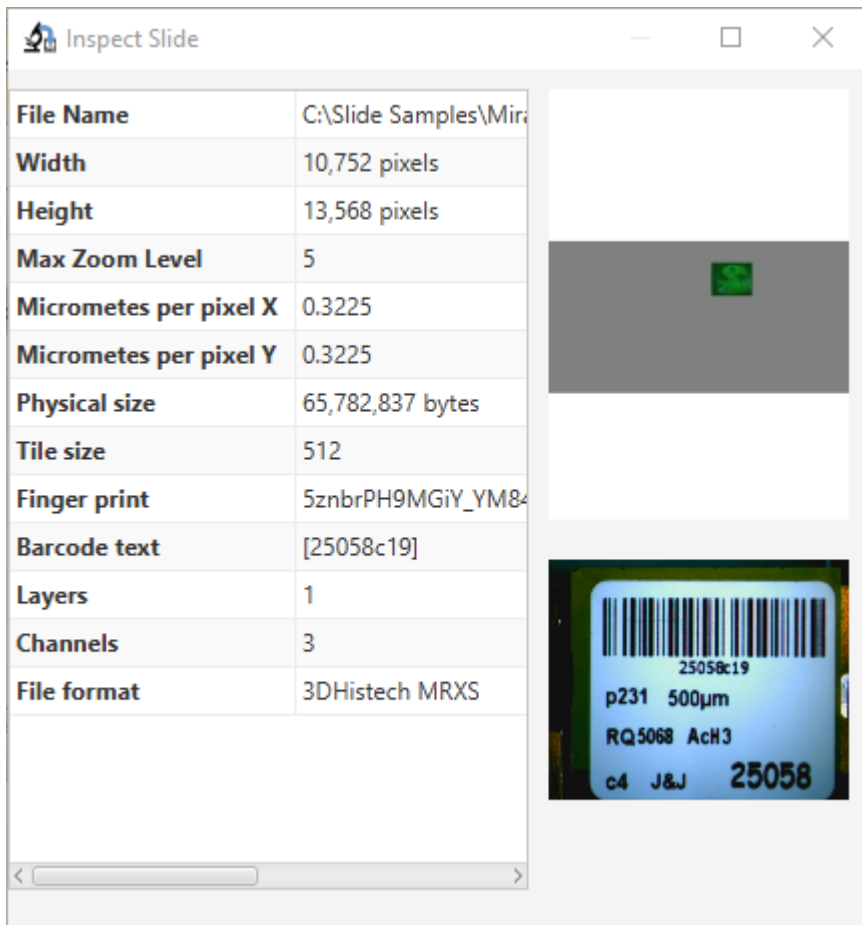


Upload slide to remote site :

Has been discussed in details earlier on this tutorial.

Inspect slide :

Information data regarding the slide (Thumbnail, fingerprint, size...)



Copy full path :

Copies the full path of the local slide to the clipboard.

Remote site

	Slidename	Slidesize	FileType	Last Modified
..				
CMU-1			File folder	
CMU-2			File folder	
CMU-3			File folder	
CMU-3.svs			SVS File	Sat Aug 03 20:34:02 WAT 2019
CMU-1.svs			File	Fri Jul 19 15:57:26 WAT 2019
CMU-1-JP2K-RGB.svs		132,565,343	SVS File	Fri Jul 19 16:02:51 WAT 2019
CMU-2.svs		390,750,635	SVS File	Sat Aug 03 20:28:29 WAT 2019
JP2K-YCBCR-1.svs		63,847,265	SVS File	Mon Jul 29 04:00:41 WAT 2019
JP2K-YCBCR-2.svs		289,250,433	SVS File	Sat Aug 03 20:35:18 WAT 2019

Initiated via mouse right click within the table view borders, it's composed of one menu item : "Transfer slide(s) to remote server".

Transfer slide to remote server :

Has been discussed in details earlier on this tutorial.

From:

<https://docs.pathomation.com/pma.transfer/> - **PMA.transfer**

Permanent link:

https://docs.pathomation.com/pma.transfer/doku.php?id=context_menu_for_slides&rev=1599278338

Last update: **2020/09/05 06:58**

