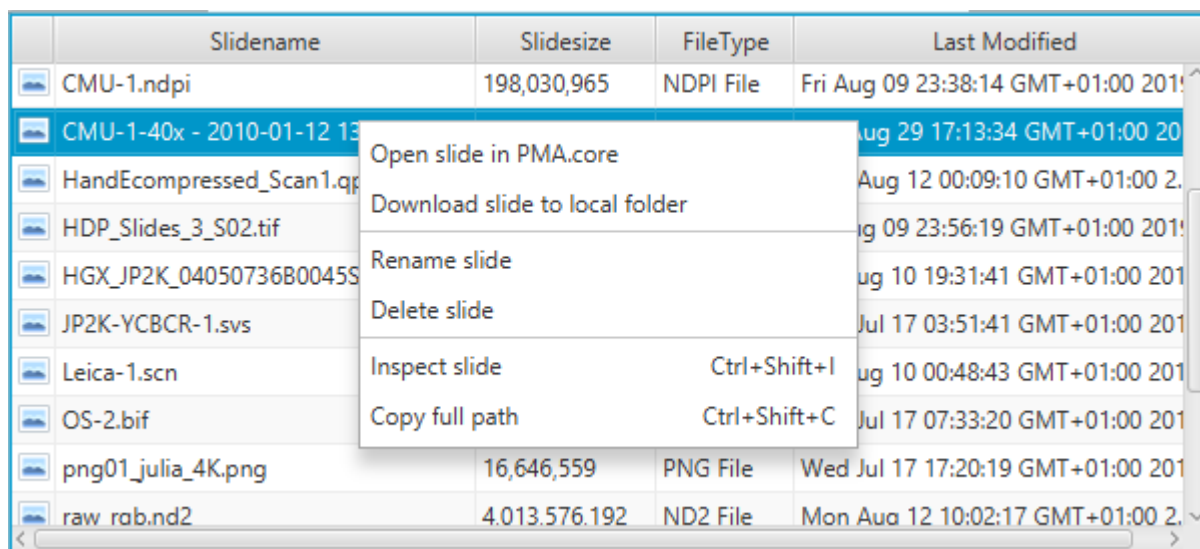


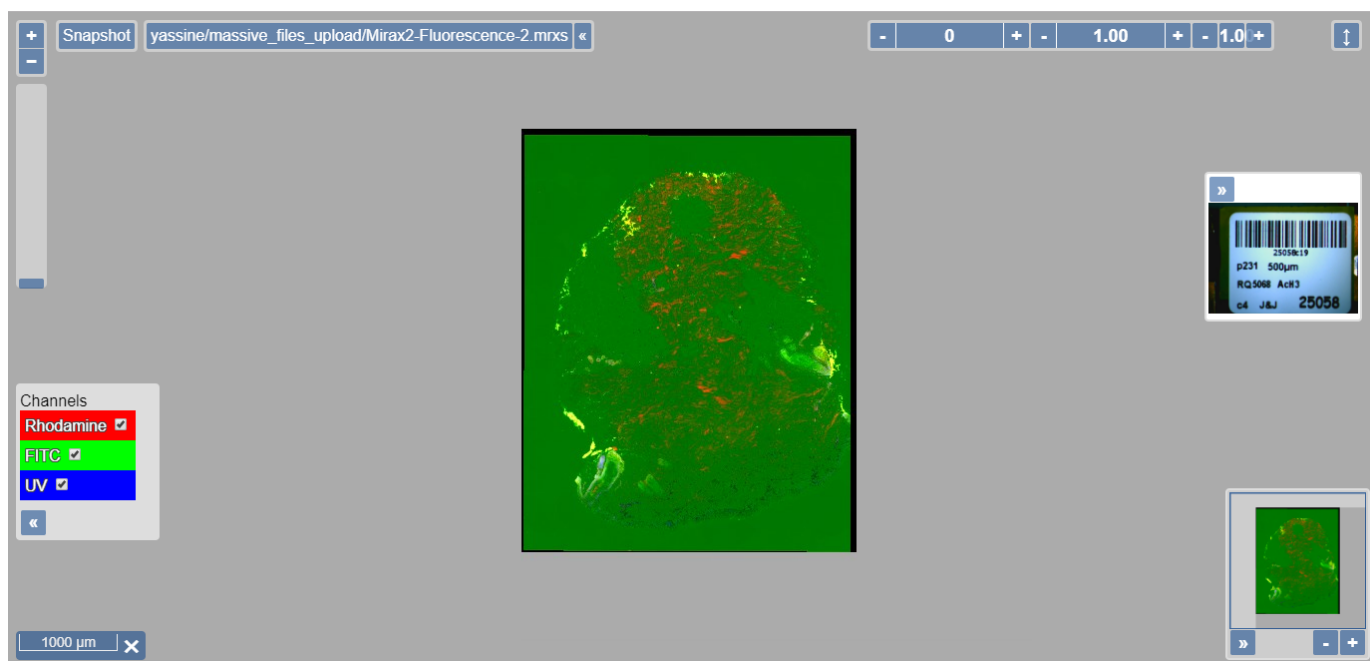
## Context menu for slides (remote)



Initiated via mouse right click within the table view borders, it's composed of six menu items : "Open slide in PMA.core", "Download slide to local folder", "Rename slide", "Delete slide", "Inspect slide", "Copy full path".

Open slide in PMA.core :

Opens selected slide in PMA.core viewer

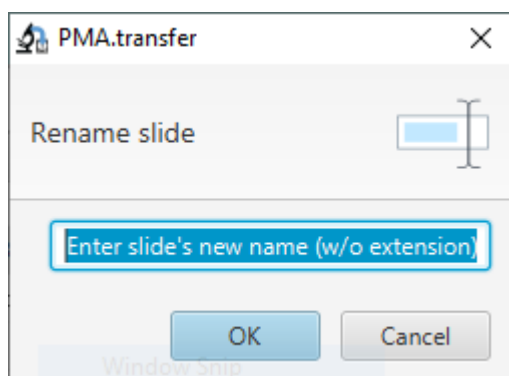


Download slide to local folder :

Has been discussed in details earlier on this tutorial.

Rename slide :

Click on this option pops up the following window :



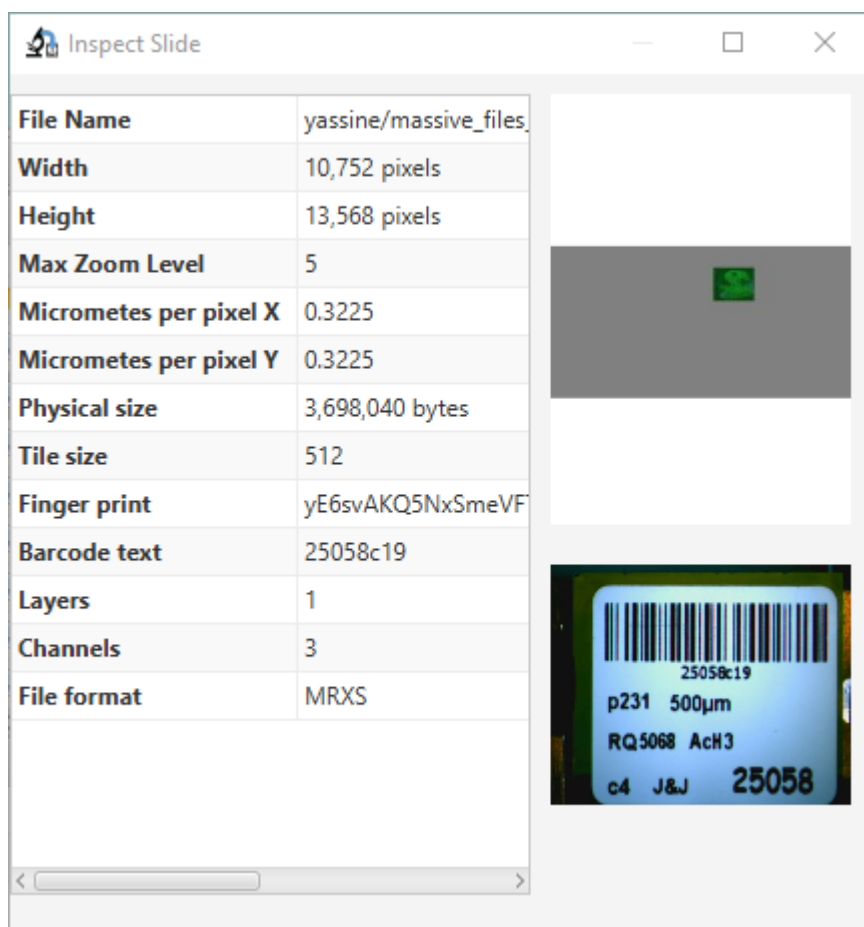
The slide name to be introduced should not include the extension and the new name shouldn't be already used on a slide on the same folder.

#### Delete slide :

A confirmation window asks for delete confirmation, once confirmed the slide is removed completely from the server (warning : this action cannot be undone).

#### Inspect slide :

Information data regarding the slide (Thumbnail, barcode, fingerprint, size...)



#### Copy full path :

Copies the full path of the remote slide to the clipboard.

From:

<https://docs.pathomation.com/PMA.transfer/> - **PMA.transfer**

Permanent link:

[https://docs.pathomation.com/PMA.transfer/doku.php?id=context\\_menu\\_for\\_slides\\_remote](https://docs.pathomation.com/PMA.transfer/doku.php?id=context_menu_for_slides_remote)

Last update: **2021/07/08 15:51**

